

Home and Contents Insurance

Product Disclosure Statement.

Effective date 20 August 2021



Whether you own and live in your home or are renting, we can offer cover against unexpected events like storm, flood, fire, theft and more with different options to help suit your needs.

Like all insurance, there are exclusions and limitations. For example, this policy isn't designed to cover loss or damage caused by a failure to maintain your property, gradual wear and tear, or deterioration.

It's important to read this Product Disclosure Statement (PDS) carefully, to make sure this insurance is right for you.

This PDS can help make choosing your cover, understanding your policy, and knowing how to claim simpler.

For help in determining your sum insured for your Building and/or Contents cover, you can use the home and contents calculators at stgeorge.com.au/homeandcontents.

ASIC's MoneySmart website at moneysmart.gov.au provides further information about how to choose a Home and Contents Insurance policy, and how to avoid underinsuring your property.

To arrange cover, get a quote or find out more:

Call 13 33 30

Visit stgeorge.com.au/homeandcontents

Ask at your local branch

Cover is subject to us accepting your application.

Answering our questions – completely and correctly

When you apply for insurance with us, we need to ask you some important questions about you and your property. We might also need to ask you some important questions if you later ask us to make changes to your insurance, or if you decide to renew it for a further year.

These questions are important because our decision whether or not to insure you, and on what terms, will be based upon your answers.

Because these questions are important, we rely on you to take **reasonable care** to answer our questions **completely and correctly** and in a manner that is not reckless or dishonest.

(In law, this is called your 'duty to take reasonable care not to make a misrepresentation'.) The duty applies to all persons who are insured under the policy. If you answer for another person who is to be an insured, we will treat your answers as theirs.

Whether or not you have taken reasonable care not to make a misrepresentation is to be determined with regard to all relevant circumstances, including the type of insurance, who it is intended to be sold to and your particular characteristics and circumstances we are aware of.

When answering our questions

- Think carefully about each question before you answer.
- Answer honestly.
- Check over your answers before submitting your application.
- If you're not sure of an answer straight away, take some time to find out.
- If you're still not sure about something – ask us. We'd be happy to help.

What happens if you don't take reasonable care?

Taking reasonable care is also very important for you. If it later turns out that you have not complied with the above duty, we may reduce or refuse a claim you make and/or cancel your policy. If your misrepresentation is fraudulent we may also treat your policy as if it never existed.

Need help?

If you aren't sure about something, or would like any help completing your application, we would be very happy to assist. Please contact us using the details on the back cover of this PDS.

Who is the insurer?

St.George Home and Contents Insurance is issued by Allianz Australia General Insurance Limited ABN 99 003 719 319 (AAGIL), which is an Authorised Representative of Allianz Australia Insurance Limited AFSL 234 708 ABN 15 000 122 850 (we', 'us', 'our'), except for Domestic Workers' Compensation cover (where applicable) which is issued by Allianz Australia Insurance Limited ABN 15 000 122 850 (Allianz Insurance). We are not a bank or other authorised deposit-taking institution.

The insurance is distributed by St.George Bank – a division of Westpac Banking Corporation ABN 33 007 457 141 AFSL 233714 (Bank), under a distribution arrangement with Allianz Insurance and AAGIL. The insurance is not a deposit with, or liability of, the Bank, and the Bank does not guarantee the insurance.

Welcome home.

Things you should know.

Your policy will help cover you should an insured event occur during your period of insurance. The insured events are described in section 4.3 on pages 19 to 29.

Insurance can't cover absolutely everything. Part 3 on pages 15 to 16 describes the general exclusions.

Exclusions and limits that apply to claims in certain circumstances are explained throughout this PDS, and items with specific limits are listed in section 4.5 on pages 42 to 43.

This cover is available only for residential properties located in Australia.

When does cover start?

If we accept your application for insurance, your cover commences at the start of the period of insurance shown in your policy schedule.

Cancellation and the 21 day cooling off period.

If you're not satisfied with your policy, you can cancel it at any time.

If you cancel your policy within 21 days of your policy commencing, you will receive a full refund of any premium you've paid (as long as you haven't made a claim). For more information, refer to *Cancelling your cover* on page 14.

When does your cover end?

Your cover will expire at the end of the period of insurance shown in your policy schedule (usually 12 months), unless cancelled by you or us earlier.

We'll send you a renewal invitation before your insurance is due to expire, or tell you in writing if we can't renew your policy for any reason.

Protecting your belongings wherever you go.

You can choose to insure your valuable portable items like watches, mobile telephones, and jewellery for those times when you have them with you and you're not home.

Part 5 on pages 44 to 45 explains how this works and has a list of all the items that we insure under this option.

When you need to claim.

Should something happen to your home or your belongings, we know you'll want help fast. See part 7 on pages 50 to 54 where we explain how to make a claim, what you need to do and how we will manage your claim.

If you do claim, you will need to pay a policy excess. You can choose the level of excess when you take out or vary your policy, which may affect your premium. Please see section 2.5 on pages 11 to 12 for details about policy excesses.

Tips to keep your home in great shape.

As a homeowner, there are things you can do to keep your home in tip-top shape to prevent or reduce damage.

Keep up maintenance – keep gutters and rooftops clear of leaves, replace any cracked or missing roof tiles.

Repair any defects – address any poor workmanship and design or structural issues.

Watch for wear and tear – check external areas, such as roofs and balconies, for deterioration.

Check for water leaks – inspect dishwasher and washing machine hoses for cracks and check wet areas for mould and leaks.

Make sure drains are working – fix any leaking pipes and flush gutters and drainpipes to ensure they're not blocked.

Look for environmental damage – keep an eye out for cracks in walls, driveways and retaining walls, and fix any sections of ceiling or roof that are sagging.

We're here to help.

If you have any questions, please call us.

Contents.

Welcome home.....	3
1 Choose your cover.....	6
What do you want to cover?.....	6
How much cover do you need?.....	6
Do you need additional cover for valuables?.....	6
2 How your policy works.....	8
2.1 Words with special meanings.....	8
2.2 About your contract.....	8
2.3 Your sum insured.....	9
2.4 Your premium.....	10
2.5 Your excess.....	11
2.6 Keep proof of ownership.....	12
2.7 Notify us about any changes.....	12
2.8 Renewing your cover.....	14
2.9 Cancelling your cover.....	14
3 General exclusions.....	15
4 Home and Contents cover.....	17
4.1 What's considered a building?	17
4.2 What's considered contents?	18
4.3 Insured events (Building cover and Contents cover).....	19
Earthquake.....	20
Escape of liquid.....	21
Explosion.....	21
Fire.....	22
Flood.....	23
Impact.....	24
Lightning.....	25
Malicious acts and unrest.....	25
Storm.....	26
Theft.....	27
Accidental breakage of glass.....	27
Electrical motor burnout.....	28
Accidental loss or damage.....	29
4.4 Additional benefits.....	30
Building additional benefits.....	33
Benefits paid in addition to your building sum insured	33
Sum insured safety net.....	33
Demolition and removal of debris.....	33
Emergency accommodation.....	33
Benefits paid as part of your building sum insured	34
Professional fees.....	34
Building laws and regulations.....	34
Emergency repairs and protection.....	34
Fire brigade and services charges.....	34
Gardens and landscaping.....	35
Purchasing a home.....	35
Mortgage discharge.....	35
Unsecured renovation materials.....	36
Other benefits.....	36
Locks and keys.....	36
Contents additional benefits.....	37
Benefits paid in addition to your contents sum insured.....	37
Sum insured safety net.....	37
Removal of debris.....	37
Emergency accommodation	37
Emergency accommodation for pets.....	38
Funeral expenses.....	38
Benefits paid as part of your contents sum insured.....	38
Emergency storage of contents.....	38
Contents moved permanently to a new property.....	38
Contents in a commercial storage facility.....	39
Fire brigade and services charges.....	39
Contents in the open air at the insured site.....	40
Contents temporarily removed to other places in Australia.....	40
Computer records.....	41

Other benefits	41
Spoilage of food and medicine	41
Contents in transit.....	41
4.5 Contents with special limits	42
5 Optional Personal Valuables cover	44
6 Other cover	46
6.1 Legal Liability cover	46
6.2 Domestic Workers’ Compensation cover	49
7 Lodging a claim	50
7.1 What we will do when you make a claim	51
7.2 Evidence of ownership, value and loss	52
7.3 How we settle your claim	52
8 Making a complaint	55
Delivering on our service promise	55
Our commitment to you	55
If you are still unhappy	55
Australian Financial Complaints Authority	55
9 Glossary of defined terms	56
10 Other information	59
10.1 The General Insurance Code of Practice	59
10.2 Financial Claims Scheme	59
10.3 Protecting your privacy	59

1 Choose your cover.

This diagram is a summary only. It's designed to provide an overview of the steps you can follow to help you choose your cover. It doesn't include all policy conditions, limits and exclusions. You'll need to refer to the relevant sections of the PDS for full details.

Step 1 What do you want to cover?

Building

For your own home or holiday home.* Check what's covered. Refer to page 17.

Contents

For your contents if you own or rent your home or have a holiday home.* Check what's covered. Refer to page 18.

Step 3 Do you need additional cover for valuables?

Higher limits for artwork, collections and collectibles

List specific items with descriptions and values within your Contents cover. For full details refer to pages 42 to 43.

Additional cover for personal valuables anywhere in the world

Add optional Personal Valuables cover* for precious items such as jewellery, watches, handbags and laptops at home or anywhere in Australia or worldwide for up to 90 days. For full details refer to pages 44 to 45.

Step 2 How much cover do you need?		Essential Care	Quality Care	Premier Care
Compare the differences below to see which level of cover may suit you.		Basic cover for insured events plus some additional benefits.	Higher cover for insured events, with additional benefits.	Our highest level of cover, with more benefits, including cover for accidental loss or damage. Contents cover extends to also cover your contents anywhere in Australia.
A. Insured events If you choose Building and/or Contents cover, you are covered for loss or damage caused by these events. Refer to page 19.	Theft	✓ Cover provided for building and contents. For Contents cover, theft is only covered if the theft occurs from inside a fully enclosed and lockable building at the insured site.	✓ Cover provided for building and contents. For Contents cover, theft is covered if the theft occurs from a fully enclosed and lockable building, and for up to \$2,000 in the open air at the insured site.	✓ Cover provided for building and contents.
	Storm, flood, fire, lightning, earthquake, impact, explosion	✓ Storm cover excludes damage to gates, fences, and freestanding walls.	✓	✓
	Escape of liquid	✓ Excludes loss or damage resulting from liquid escaping from a shower recess.	✓	✓
	Malicious acts and unrest	✓	✓	✓
	Accidental breakage of glass	×	✓	✓
	Electrical motor burnout	×	✓	✓
	Accidental loss or damage	×	×	✓
B. Additional benefits Your cover comes with these valuable extras plus more. Full list from page 30 (Building cover) and page 31 (Contents cover).	Building cover – safety net	Up to 10% of your sum insured.	Up to 20% of your sum insured.	Up to 30% of your sum insured.
	Contents cover – safety net	Up to 5% of your sum insured.	Up to 10% of your sum insured.	Up to 20% of your sum insured.
	Building cover – emergency accommodation	Up to \$10,000.	Up to 10% of your sum insured or the cost of accommodation for up to 12 months in total, whichever is less.	Up to 10% of your sum insured or the cost of accommodation for up to 12 months in total, whichever is less.
	Contents cover – emergency accommodation	Up to \$5,000.	Up to 10% of your sum insured or the cost of accommodation for up to 12 months in total, whichever is less.	Up to 10% of your sum insured or the cost of accommodation for up to 12 months in total, whichever is less.
C. Contents cover limits – examples Here are some examples of contents that are covered, but only up to a certain amount. Full list on pages 42 to 43.	Artwork, collections and collectibles	Up to \$3,000 in total.	Up to \$10,000 in total.	Up to \$20,000 in total.
	Jewellery and watches	Up to \$500 per item/\$3,000 total per claim.	Up to \$1,000 per item/\$5,000 total per claim.	Up to \$5,000 per item/\$20,000 total per claim.
D. Other cover included	Legal Liability	Up to \$20 million.	Up to \$20 million.	Up to \$20 million.

* For holiday homes not all cover options are available. Building and Contents cover is available. Choose from Essential Care and Quality Care (but not Premier Care). Optional Personal Valuables cover is not available.

If you have Premier Care and, in the event of a claim, the benefit payable would be greater under Quality Care or Essential Care, then the greater benefit will be paid. Similarly, if you have Quality Care and, in the event of a claim, the benefit payable under Essential Care would be greater, then the greater benefit will be paid.

2 How your policy works.

This section tells you how your policy works and what you need to know about managing your policy.

2.1 Words with special meanings.

Certain words have a special meaning in this PDS and you can read the full list and their meanings in part 9 *Glossary of defined terms* on pages 56 to 58. Some important words to know upfront are shown here:

- **You, your or insured** means:
 - any policyholder,
 - the policyholder's family who normally resides with the policyholder in the home (excluding guests, visitors and boarders),
 - in relation to Building cover, any person who has a legal or equitable interest in the insured property (e.g. a mortgagee), and
 - in relation to Contents cover for a strata title property, any person who has a legal or equitable interest in the insured property (e.g. a mortgagee).
- **We, our or us** means the insurer identified on the inside front cover.

2.2 About your contract.

Your insurance documents.

- **PDS:** This PDS explains our Home and Contents Insurance product. It's designed to help you decide if this insurance is right for you and help you choose your cover options.
- **Policy schedule:** If you purchase this insurance, you'll receive a policy schedule showing your premium, the level of cover and the sum(s) insured you have chosen, plus the excesses that apply and other details about your policy.

This PDS and your policy schedule become your contract with us (only those parts of this PDS relevant to your choices of cover will apply).

This PDS has been prepared and issued solely by us. Although it refers to Domestic Workers' Compensation cover, it is not a PDS for that cover. For more details, see page 49.

You should read this PDS and policy schedule carefully to ensure you understand and are happy with your cover. We encourage you to keep them in a safe place so you can refer to them if you need to make a claim.

Your policy is governed by the laws of the Australian state or territory of the residential property stated in the policy schedule. Any part of this policy which is, or becomes, unlawful is invalid to the extent of that unlawfulness.

These documents may change.

Where there is a change to information in this PDS that is not materially adverse to you, the updated information will be available on our website or by calling us for a free paper copy.

For new or renewing policyholders, any changes to information in this PDS will be included in a supplementary or replacement PDS, which we will give to you.

If there are changes to your policy, for example, you change your postal address or cover options, we will send you a revised policy schedule showing the new details. We may give you the revised policy schedule and any other policy documentation (including notices required under the *Insurance Contracts Act*) in person, by post or by email to the addresses you've provided.

Policies with more than one policyholder.

If there is more than one policyholder, each policyholder agrees that:

- a request, statement, act, omission, or claim by any policyholder is made on behalf of all policyholders, and
- we may give notices, information and documents in relation to your policy to any policyholder, on behalf of all policyholders.

If you personally give or receive a notice or document in relation to the policy, you must tell each other policyholder that you have given or received that notice or document.

For example, if you tell us that you have changed your address, you must tell each other policyholder that you have changed the address for notices under the policy. Or, if we send you a notice cancelling your policy, you must tell each other policyholder that the policy has been cancelled.

If any other person is covered under your policy, you agree to make the terms of your policy available to them at their reasonable request.

Special conditions may sometimes apply.

When we offer to issue, vary or renew your policy, we may apply special conditions that exclude, restrict or extend cover for a particular insured, matter or insured event. For example, during a flood or bushfire catastrophe we may not be able to offer cover for loss or damage from flood or bushfire for a specified period from when you purchase or vary your policy.

Your current policy schedule will show any special conditions that apply to your policy.

2.3 Your sum insured.

The 'sum insured' is the amount for which each of your building, contents, personal valuables and legal liability are covered – they will be shown in your policy schedule.

When you apply for cover you choose the sum insured for your Building and/or Contents policy and for some listed items of contents and specified personal valuables within your policy. We will inform you if your requested sum insured is less than our minimum acceptable sum insured or greater than our maximum acceptable sum insured.

You may also choose from a range of unspecified personal valuables options (for more information on unspecified personal valuables refer to part 5 on pages 44 to 45).

Each time we offer to renew your policy, we will automatically adjust the sum insured for your Building cover and/or Contents cover (as applicable) to make an allowance for inflation and the increased costs of construction materials, goods and services (for Building cover) and replacement costs (for Contents cover). This helps reduce your risk of being underinsured. This will also result in an increase to your premium.

If you want to adjust your sum insured at any time, please let us know.

In some cases, there is a maximum amount payable for certain items and benefits, which are outlined in detail throughout this PDS.

For help in determining the sum insured for your Building and/or Contents cover, you can use the home and contents calculators on our website.

Keep your sum insured up to date.

You can apply to change your sum insured at any time to ensure you remain appropriately covered. We recommend reviewing your cover regularly to take into account things such as:

- upgrades or renovations,
- changes to building codes, e.g. after a bushfire event,
- new purchases and gifts.

You've got a safety net just in case.

Your Building cover and Contents cover include extra protection, in addition to your sum insured, to help cover unexpected costs to rebuild, repair or replace your building and contents. For example, construction costs often increase after a widespread storm, flood or bushfire because the demand for labour and building materials is higher.

The safety net is an additional benefit and the amount of the benefit will depend on whether you choose Essential Care, Quality Care or Premier Care. You can read the details in the *Additional benefits* section starting on page 30.

2.4 Your premium.

How is your premium calculated?

Your premium is made up of the amount you pay for your cover plus any applicable government charges and GST, which are shown separately on your policy schedule. Government charges differ in each state and territory and may include stamp duty, a Fire Services Levy, and a State Emergency Service Levy.

The cost of your premium is based on a wide range of factors, including:

- your home's anticipated exposure to insured events, such as bushfire, storm, flood and theft, based on factors such as:
 - your home's location,
 - your home's construction materials e.g. double brick, timber,
 - your type of home e.g. apartment, freestanding house, strata title,
 - when your home was constructed,
 - security features, such as an alarm system, and
 - the oldest policyholder's date of birth,
- your level of cover, your sum(s) insured and excesses, and
- the expected cost of claims and business expenses.

In addition, when calculating your premium, we may take into account how long you have held your policy and the premiums that you have previously paid, to help ensure that we can minimise any significant premium changes. As such, different premium rates may apply to new policyholders and renewing policyholders.

As these factors change over time, your premiums may increase or decrease.

Generally speaking, here's how your choices may affect your premium:

Building cover and Contents cover:

- The premium for Essential Care is less than Quality Care.
- The premium for Quality Care is less than Premier Care.
- An additional premium is payable if you add optional Personal Valuables cover.
- The higher the sum insured chosen for an item or policy, the higher your premium.
- The higher the excess for your policy, the lower your premium.

Personal Valuables:

- The higher your sum insured for a particular item or policy, the higher your premium.
- If you select a combination of specified and unspecified cover, the premium is the sum of both components.

Based on your sum(s) insured, a minimum premium may be applied

Reducing your premium.

Discounts may apply to your premium, subject to maximum discount thresholds, including:

- Your Building and Contents cover are combined in one policy.
- You don't make any claims (no claim discount).

We may also offer other discounts from time to time.

Increases to your premium on renewal.

Each time we offer to renew your policy, we will automatically adjust the sum insured for your Building cover and/or Contents cover (as applicable) to make an allowance for increased costs of construction materials, goods and services (for Building cover) and replacement costs (for Contents cover).

This will also result in an increase to your premium. If you want to adjust your sums insured at any time, please let us know.

No claim discounts.

You may be eligible to receive a 'no claim discount' on your premium. When you initially take out a policy, your 'no claim discount' will be based on your previous claims history. The 'no claim discount' then increases by 5% for each claim free year, up to a maximum discount of 15%. If we agree to pay a claim, any 'no claim discount' you have will be reduced at your next renewal date by 5% for each benefit paid, for example, a Building benefit and/or a Contents benefit.

Paying your premium.

You can pay your premium annually or by monthly instalments – we won't charge a fee to pay by monthly instalments (however, check with your financial institution to see if charges apply).

If you make a change to your policy during the year that increases your premium, you may need to pay an additional pro-rata amount.

If you pay by direct debit and we offer to renew cover, we will automatically renew your policy and continue to debit premiums unless you tell us otherwise.

All amounts which you or we pay must be in Australian currency.

Managing monthly payments.

If you decide to pay by monthly instalments, you'll need to:

- make sure your nominated account will accept direct debits,
- make sure there are sufficient funds available in your account for each payment, and
- tell us at least three business days before your next payment is due, if you want to change your direct debit arrangements.

If you fail to make a payment and it remains outstanding for at least one month, you won't be covered and we may cancel your policy. For more details, refer to *When can we cancel your policy?* on page 14.

Changes to your premium

When you ask us to make a change to your policy, and we agree, we may need to refund a portion of your premium or you may need to pay us additional premium to reflect the change in cover.

If you pay your premium by monthly instalments, your future monthly instalments will be automatically updated to reflect any change in premium.

If you pay your premium annually, we will send you a notice for payment if any additional premium is owing, or provide you with a refund, to reflect any change in premium.

What happens if you don't pay your premium?

If you don't pay your premium, we may cancel your policy. For more details, refer to *When can we cancel your policy?* on page 14.

Payment of amounts of \$1 or less.

If any premium that you owe us or we owe you at any time is \$1 or less, we may choose not to refund the difference or not to request payment of the additional amount. We will donate any surplus received by us to a registered charity of our choosing on an annual basis.

2.5 Your excess.

An excess is an amount you're required to pay if we accept your claim. The excesses that apply to your policy will be shown on your policy schedule.

Your excess options:

- \$100
- \$250
- \$500
- \$1,000
- \$2,000
- \$5,000

However, in some instances, we may impose an additional excess when you take out or vary your policy, or when we offer to renew your policy.

The excesses which apply to claims you make under Optional Personal Valuables cover, and for loss or damage caused by the insured events 'accidental loss or damage' and 'earthquake', are outlined in this PDS in the relevant sections.

Paying your excess.

If the amount of your claim is less than the excess, the claim won't be paid.

If you make a claim under:

- Building cover and Contents cover,
- Building cover and Optional Personal Valuables cover,
- Contents cover and Optional Personal Valuables cover, or
- Building cover, Contents cover and Optional Personal Valuables cover,

for the one insured event, only the higher excess applies.

2.6 Keep proof of ownership.

Keep records of your belongings and any documents that prove their value, as these records may assist if you need to make a claim.

You can read details in the *Lodging a claim* section starting on page 50.

2.7 Notify us about any changes.

You must notify us before or as soon as you become aware of any of the circumstances in this section as they may affect your cover.

We'll then discuss any changes that may be needed to your cover, for example changes in premium, conditions, limits, exclusions or when cover will stop. We'll confirm the agreed changes in writing, if applicable.

You must notify us before or as soon as you become aware that:

- the insured property will become unoccupied for more than 60 consecutive days. Unless we agree otherwise, your policy will provide only limited cover if the insured property has been unoccupied for more than 60 consecutive days. For more details, refer to *If your home will be unoccupied* on page 13,

- there are plans to build, renovate, make structural alterations or additions, demolish or relocate a building at the insured site. Unless we agree otherwise, your policy will provide only limited cover while construction, renovations, structural alterations, additions, demolition or relocations are being carried out. For more details refer to *Before you begin building or renovating* on page 13,
- the insured property has existing unrepaired damage,
- the insured property is not watertight, well maintained, structurally sound and secure,
- security devices that any insured previously told us about have been removed or are no longer working,
- you or any person insured by this policy make a purchase that is likely to affect the adequacy of the sum insured,
- the insured property will be used for any business, trade or profession (other than use as a home office, for tutoring, or for ad hoc babysitting). Unless we agree otherwise, your policy will not provide any cover while your insured property is being used for any business, trade or other profession. For more details, refer to *General exclusions* on pages 15 to 16,
- the occupancy of a building on the insured site will change e.g. renting out a building, or the property will become your holiday home. Unless we agree otherwise, your policy will not provide any cover while your insured property is being rented or used as a holiday home,
- you have more than three people living in the home who are not:
 - a family member of a policyholder, or
 - a family member of anyone living in the home,
- the insured property will be sold. Your policy will not provide any cover from the date risk transfers upon the sale of the insured property, and you will be entitled to a partial refund of premium,

- any contents insured under the policy will be moved into storage (including onsite storage),
- any insured will move to a new residential address,
- any insured has been convicted of, or had fines or penalties imposed, for any crime involving drugs, dishonesty, arson, theft, fraud or violence against any person or property in the past five years,
- any insured has had any Home and Contents insurance or Landlord insurance declined or cancelled in the past five years.

If your home will be unoccupied.

'Unoccupied' means there is no person living and sleeping in the home.

Unless we agree otherwise, your policy will not cover the following insured events if your home is unoccupied for more than 60 consecutive days:

- Escape of Liquid, if it originates from the insured site,
- Fire, if it originates from the insured site,
- Theft, and
- Malicious acts and unrest.

If we agree to continue providing full cover during the period of unoccupancy, you must:

- lock all windows and doors,
- have mail and newspapers collected daily,
- have lawns and gardens kept in tidy order,
- pay a higher excess if we request it,
- arrange for a weekly inspection by a responsible person, and
- notify us when the property becomes re-occupied.

Call us to advise if your home will be unoccupied for more than 60 consecutive days and we will advise you if we can continue to provide you with full cover.

If you're moving house.

If you're moving house, please contact us. To ensure your building and contents are covered at your new address, you'll need to take out a new policy.

Before you begin building or renovating.

If you plan to build, renovate, make structural alterations or additions, demolish or relocate a building at the insured site, you need to inform us before work begins. Unless we agree otherwise, your policy will not provide Building, Contents or Legal Liability cover while construction, renovations, structural alterations or additions, demolitions or relocations are being carried out.

For example, you must tell us about any extensions to buildings, new outbuildings and building work to the structural elements of your property: the roof, external walls, foundations (including stumps, stilts and poles), internal load-bearing walls, staircases, balconies, exterior doors and windows. You do not need to tell us about non-structural improvements such as redecorating a room or laying new carpet.

Your policy also won't cover any legal liability that arises during construction of your building or from building work costing more than \$50,000. For more details, refer to *Legal Liability cover* on pages 46 to 48.

Call us and we'll tell you if your building work will affect your policy.

2.8 Renewing your cover.

Your cover will expire at the end of the period of insurance shown in your policy schedule (usually 12 months). We'll send you a renewal invitation before your insurance is due to expire, or tell you in writing if we can't renew your policy for any reason.

If you pay by direct debit and we offer to renew cover, we will automatically renew your policy and continue to debit premiums unless you tell us otherwise.

Each time we offer to renew your policy, we will automatically adjust the sum insured for your Building cover and/or Contents cover (as applicable) to make an allowance for inflation and the increased costs of construction materials and goods and services (for Building cover) and replacement costs (for Contents cover). This will also result in an increase to your premium.

If you want to adjust your sum insured at any time, please let us know.

2.9 Cancelling your cover.

When can you cancel your policy?

You can cancel your policy at any time by calling us. Depending on your circumstances, we may need this in writing.

The cancellation takes effect from the date we receive your request, or such later date as you request.

If you do not advise us of your intention to cancel your policy:

- for a monthly premium instalment policy – we will continue to provide cover and debit monthly premium instalments, or
- for an annual premium payment policy – we will continue to provide cover until the end of the current period of insurance.

We will not backdate your cancellation.

If you cancel your policy after the 21 day cooling off period (refer to page 3 for details), we will refund the amount of the premium which relates to the period of insurance which has not expired, less an administration fee of \$30, within 15 business days.

If you pay your premium by monthly instalments, the administration fee will be deducted from any refund you're owed, or debited from your nominated monthly payment account.

If you pay your premium annually, the administration fee will be deducted from any refund you're owed.

When can we cancel your policy?

We can cancel your policy (including any renewed policy) for any of the reasons described in the *Insurance Contracts Act*, including if you made a misrepresentation to us before entering into the insurance, do not comply with the terms of your policy (including non-payment of premium), or make a fraudulent claim.

We will give you prior written notice of the cancellation and, if you ask us, give reasons for cancelling the policy. The policy will be cancelled with effect from the earlier of:

- when you enter into another contract of insurance that is intended to replace this policy, and
- the time specified in the notice.

3 General exclusions.

Of course, insurance can't cover absolutely everything. Here are the general exclusions that apply to all cover described in this PDS, other than:

- Legal Liability cover (refer to section 6.1 on pages 46 to 48), except as otherwise stated, and
- Domestic Workers' Compensation cover (refer to section 6.2 on page 49).

What types of loss and damage are excluded.

Your policy does not cover loss or damage from the following situations.

Any loss or damage to the extent that it is caused by or arises from:

- defects in design, structure, materials, workmanship or construction at the insured site or strata site if your home is under a strata title or similar plan, which you knew about or should have reasonably known about at the time of the loss or damage arising,
- failure to take reasonable steps to keep the insured property watertight, well maintained, structurally sound and secure, for example:
 - a storm can highlight defects rather than cause them, and
 - damage due to lack of maintenance is not covered.

Refer to *Tips to keep your home in great shape* on page 3 for examples of some of the steps you can take.

Any loss or damage that is predominantly caused by or arises from:

- wear and tear, gradual deterioration, or fading,
- rust, corrosion, oxidation, mould, mildew or atmospheric conditions, unless it is a direct result of an insured event,
- earth or soil movement including landslide, subsidence, erosion or heave, unless it is a direct result of an insured event,

- settling, expansion, shrinkage or vibration, unless it is a direct result of an insured event,
- actions or movements of the sea or high water (other than storm surge and tsunami),
- hydrostatic pressure,
- invasive tree roots, which you knew about or should have reasonably known about at the time of loss or damage arising,
- acts by you, or someone acting with your consent, which are intended to cause loss or damage to your property,
- unlawful acts by you or someone acting with your consent,
- any person, organisation or authority who legally damages or destroys or confiscates any insured property, unless it's a direct result of an insured event or to mitigate loss to your property, or adjacent property, for example loss due to water damage to an insured property while putting out a fire at an adjacent property,
- malicious acts of a person who is on the insured site with your consent or the consent of someone who lives at the insured site,
- vermin, insects or pests,
- animals or birds biting, chewing or scratching,
- computer virus, hacking, cyber-attack or similar occurrence.

Any loss or damage to the extent that it is caused by or arises from:

- war, invasion, act of foreign enemy, hostilities and war-like operations (whether war be declared or not), civil war, mutiny, popular or military rising, insurrection, rebellion, revolution or military or usurped power,
- any act of terrorism resulting from, or arising out of or in connection with, biological, chemical, radioactive or nuclear pollution, contamination or explosion,

- nuclear weapons material or ionising radiation or contamination by radioactivity from any nuclear fuel or nuclear waste or from the combustion of nuclear fuel, or
- chemical or biological materials or contamination caused by chemical or biological materials.

Any loss or damage to common property where the home is part of a strata, group, company or community title plan.

Any loss or damage to the extent that it is covered by a warranty, guarantee or service contract.

The costs associated with obtaining approvals to replace structures that were erected by you or at your request, without obtaining all legally required approvals.

In addition to the above types of loss and damage, your policy does not cover consequential financial loss, e.g. loss of profits.

When your policy does not provide cover.

Your policy does not provide cover:

- while your property, or any part of the insured site, is being used for any business, trade, profession, occupation or commercial purposes, e.g. use as a farm, guest house, display home, club house, boarding house or commune, unless we agree otherwise (other than use as a home office, for tutoring, or for ad hoc babysitting),
- while the insured site or part of the insured site is being leased to a third party, or
- after the date risk transfers upon the sale of the insured property.

4 Home and Contents cover.

4.1 What's considered a building?

✓ **Building or home means:**

Residential building(s) on the insured site which includes structural improvements, fixtures and fittings including:

The basics.

- walls, doors, windows, fences, gates, decks, patios, balconies, paths and driveways.

Fixtures and fittings.

- permanently fixed domestic items, fixtures and fittings e.g. dishwashers installed in a cabinet, wall-mounted air conditioners,
- fixed wall and floor coverings e.g. carpets, wallpaper and tiles,
- floorboards, including floating floorboards,
- fixed internal and external window coverings, including curtains, blinds, awnings and screens,
- equipment permanently connected to gas, plumbing, sewerage, drainage or electrical systems, or communication installations, which you own or are legally responsible for e.g. light fittings, alarm systems, kitchen and bathroom fixtures and fittings, and
- solar panels.

Home office rooms.

- rooms within your main residential building(s) used as a home office.

Other residential structures.

- structures such as garages, carports, sheds and other domestic outbuildings,
- permanently fixed swimming pools, saunas, spas and tennis courts, including their fixed fittings and fixed accessories,
- wharves, jetties and pontoons located within the insured site or where the structure begins or terminates on the insured site, provided that the wharf, jetty or pontoon is not publicly accessible by land, and
- tanks that store heating oil, gas or water.

✗ **Building or home does not mean:**

Greenery and outdoor decorations.

- lawn, landscaping, plants, shrubs, trees or potted plants – unless covered under Premier Care (refer to page 35), or
- outdoor decorations, or water features unless covered under Premier Care (refer to page 35).

Business, farming, or blocks over 40,000 square metres.

- buildings or structures used for business, trade, professional, occupational or commercial purposes (other than use as a home office, for tutoring or for ad hoc babysitting),
- buildings or sites used for farming activity, or
- buildings located on sites exceeding 40,000 square metres.

Other structures.

- display homes, guest houses, boarding houses, houseboats, caravans, mobile homes (fixed or freestanding), or shipping containers.

Strata property.

- common property where the home is part of a strata, group, company or community title plan.

4.2 What's considered contents?

✓ Contents means:

Domestic items you own or are legally responsible for and which you normally keep in a building at the insured site, including:

General household items.

- furniture, furnishings, household goods,
- food, kitchenware, towels, linen,
- appliances (including unfixated dishwashers) and electrical items,
- music and software obtained legally,
- mobile phones, other portable electronic and communication equipment, tablets, desktop and portable computers, and their accessories,
- clothing, jewellery, toiletries, books, toys,
- artwork, collections and collectibles,
- fixed and unfixated carpets and rugs (if you also have Building cover, payment for a benefit will be made under your Building cover only),
- floating floorboards in a home which is part of a strata title plan,
- internal window coverings e.g. blinds, curtains, (if you also have Building cover, payment will be made under your Building cover only),
- sporting equipment including golf buggies,
- musical instruments, and
- tools, registered firearms.

Personal aids.

- wheelchairs, mobility scooters, and
- personal portable medical equipment (e.g. insulin pumps, hearing aids, dentures, prosthetics) and medicine.

Outdoor items.

- lawn mowers (including ride-on),
- mini-bikes (up to 50cc) that don't require registration,
- items designed for use outside which aren't permanently fixed (Quality Care and Premier Care only) e.g. above ground swimming pools, mobile BBQ, outdoor furniture,
- non-motorised watercraft up to four metres in length, and
- surfboards, sailboards, surf skis, canoes and kayaks.

Fixtures and fittings, structural improvements.

- fixtures and fittings installed by you as a tenant, with the approval of the landlord,

- fixtures and fittings owned by your landlord at the insured site and for which you are liable as a tenant under the terms of a lease or similar agreement, and
- structural additions and improvements to a home which is part of a strata title plan, which are not otherwise insured under the body corporate or equivalent's building insurance policy, e.g. new dishwasher or renovated bathroom or kitchen.

Guests' belongings.

- guests' or visitors' belongings that are in a building at the insured site (Quality Care only) or anywhere at the insured site (Premier Care only).

× Contents does not mean:

Greenery and animals.

- lawn, landscaping, plants, shrubs, trees, or
- animals.

Vehicles.

- motorised vehicles, go-karts, mini-bikes over 50cc, trail bikes, any registrable vehicles, caravans or trailers (unless stated otherwise),
- motorised watercraft and all watercraft more than four metres in length (other than surfboards, sailboards, surf-skis, canoes and kayaks), or
- aircraft, drones, micro-lights, hang gliders, and their parts and equipment (unless it is a model or toy aircraft, provided they are being used legally).

Business items.

- trade stock and other contents relating to and to be used in connection with a commercial business, other than home office equipment.

Other.

- any structure or property that is included in the definition of building (unless specified otherwise),
- common property where the home is part of a strata, group, company or community title plan,
- bullion, or
- records or data stored in a computer (unless covered in Premier Care Additional benefits).

Some contents items have limits on cover. Refer to pages 42 to 43 for details.

4.3 Insured events (Building cover and Contents cover).

This summary of insured events is a reference tool only. For further details of the relevant terms and conditions, limits and exclusions on cover, refer to the page numbers shown.

Insured events summary.	Essential Care	Quality Care	Premier Care	Page
Earthquake	✓	✓	✓	20
Escape of liquid	✓ Excludes loss or damage resulting from liquid escaping from a shower recess.	✓	✓	21
Explosion	✓	✓	✓	21
Fire	✓	✓	✓	22
Flood	✓	✓	✓	23
Impact	✓	✓	✓	24
Lightning	✓	✓	✓	25
Malicious acts and unrest	✓	✓	✓	25
Storm	✓ Excludes damage to gates, fences and freestanding walls.	✓	✓	26
Theft	✓ Cover provided for building and contents. For Contents cover, theft is only covered if the theft occurs from a fully enclosed and lockable building at the insured site.	✓ Cover provided for building and contents. For Contents cover, theft is covered if the theft occurs from a fully enclosed and lockable building at the insured site and for up to \$2,000 in the open air at the insured site.	✓	27
Accidental breakage of glass	×	✓	✓	27
Electrical motor burnout	×	✓	✓	28
Accidental loss or damage	×	×	✓	29


If you have Premier Care and, in the event of a claim, the benefit payable would be greater under Quality Care or Essential Care, then the greater benefit will be paid. Similarly, if you have Quality Care and, in the event of a claim, the benefit payable under Essential Care would be greater, then the greater benefit will be paid.

Insured events.

Depending on whether you have Building cover or Contents cover, we will insure your building and/or contents against loss or damage caused by the following events if they occur during your period of insurance.

✓ indicates that cover is provided under a specific type of policy, subject to the terms and conditions of the policy.

X indicates that cover is not provided under a specific type of policy.

 Earthquake.	Essential Care	Quality Care	Premier Care
<p>Covered.</p> <p>Loss or damage caused by earthquake.</p> <p>For every claim we agree to pay, your excess will be the greater of your basic excess or \$300.</p>	✓	✓	✓
<p>Not covered.</p> <ul style="list-style-type: none"> • Loss or damage to the extent that it is caused by or arises from: <ul style="list-style-type: none"> - defects in design, structure, materials, workmanship or construction at the insured site, (or strata site if your home is under a strata title or similar plan) which you knew about or should reasonably have known about at the time of the loss or damage arising, or - failure to take reasonable steps to keep the insured property well maintained, structurally sound and secure (refer to <i>Tips to keep your home in great shape</i> on page 3 for examples of some of the steps you can take). • Loss or damage that is predominantly caused by or arises from: <ul style="list-style-type: none"> - wear and tear, or gradual deterioration, - hydrostatic pressure, - earth or soil movement including landslide, subsidence, erosion or heave, unless it is a direct result of an earthquake during the period of insurance, or - settling, expansion, shrinkage or vibration, unless it is a direct result of an earthquake during the period of insurance. 			



Escape of liquid.

	Essential Care	Quality Care	Premier Care
<p>Covered.</p> <p>Loss or damage caused by the accidental escape of liquid from any fixed pipe, fixed tank, waterbed, fish tank, or fixed item used to hold liquid, but not escape of liquid which is evident and which you fail to rectify.</p> <p>We will also pay reasonable exploratory costs for non-invasive leak detection to locate the source of the damage, provided we have agreed to pay for the loss or damage caused by the escape of liquid.</p>	✓	✓	✓
<p>Not covered.</p> <ul style="list-style-type: none"> Loss, damage or repairs to the item from which the liquid escaped, and if the liquid escaped from a shower recess, shower base or wet room, the associated cost of re-tiling or waterproofing the walls or floor of the shower recess, shower base or wet room. Repair or replacement of undamaged parts of your building and/or contents to match property that has been repaired or replaced. Loss or damage that is predominantly caused by or arises from: <ul style="list-style-type: none"> hydrostatic pressure, invasive tree roots, which you knew about or should reasonably have known about at the time of loss or damage arising, acts by you, or someone acting with your consent, which are intended to cause loss or damage to your property, or unlawful acts by you or someone acting with your consent. Unless we agree otherwise, your policy will not cover loss or damage if your home has been unoccupied for more than 60 consecutive days. 			



Explosion.

	Essential Care	Quality Care	Premier Care
<p>Covered.</p> <p>Loss or damage caused by an explosion.</p>	✓	✓	✓
<p>Not covered.</p> <ul style="list-style-type: none"> Loss or damage to the extent that it is caused by or arises from: <ul style="list-style-type: none"> defects in design, structure, materials, workmanship or construction at the insured site (or strata site if your home is under a strata title or similar plan) which you knew about or should reasonably have known about at the time of the loss or damage arising, or failure to take reasonable steps to keep the insured property well maintained, structurally sound and secure (refer to <i>Tips to keep your home in great shape</i> on page 3 for examples of some of the steps you can take). Loss or damage that is predominantly caused by or arises from: <ul style="list-style-type: none"> wear and tear, or gradual deterioration, acts by you, or someone acting with your consent, which are intended to cause loss or damage to your property, unlawful acts by you or someone acting with your consent, any person, organisation or authority who legally damages or destroys or confiscates any insured property, unless it's a direct result of an insured event, or to mitigate loss to your property, malicious acts of a person who is on the insured site with your consent or the consent of someone who lives at the insured site, or hydrostatic pressure. 			



Fire.

	Essential Care	Quality Care	Premier Care
<p>Covered.</p> <p>Loss or damage caused by fire where there was a flame.</p> <p>Loss or damage caused by smoke from:</p> <ul style="list-style-type: none"> • a bushfire, • a fire on your property, or • a fire originating from your neighbour's property. 	✓	✓	✓
<p>Not covered.</p> <ul style="list-style-type: none"> • Loss or damage that is caused by or arises from: <ul style="list-style-type: none"> – bushfire for a period of 7 days from the date the cover was initially provided by us, unless this policy is replacing another policy with equivalent bushfire cover and there has been no gap in cover and no change to the sum insured, or you have entered into a contract to purchase the property and the risk has passed to you as purchaser, or – scorching or melting where there was no flame. • Loss or damage that is predominantly caused by or arises from: <ul style="list-style-type: none"> – acts by you, or someone acting with your consent, which are intended to cause loss or damage to your property, – unlawful acts by you or someone acting with your consent, – any person, organisation or authority who legally damages or destroys or confiscates any insured property, unless it's a direct result of an insured event or to mitigate loss to your property, for example loss due to water damage to an insured property while putting out a fire at an adjacent property, – malicious acts of a person who is on the insured site with your consent or the consent of someone who lives at the insured site, or – wear and tear, or gradual deterioration. • Loss or damage to the extent that it is caused by or arises from: <ul style="list-style-type: none"> – defects in design, structure, materials, workmanship or construction at the insured site (or strata site if your home is under a strata title or similar plan) which you knew about or should reasonably have known about at the time of the loss or damage arising, or – failure to take reasonable steps to keep the insured property well maintained, structurally sound and secure (refer to <i>Tips to keep your home in great shape</i> on page 3 for examples of some of the steps you can take). • Unless we agree otherwise, your policy will not cover loss or damage if your home has been unoccupied for more than 60 consecutive days. 			



Flood.

	Essential Care	Quality Care	Premier Care
<p>Covered.</p> <p>Loss or damage caused by flood, including tsunami and storm surge.</p>	✓	✓	✓
<p>Not covered.</p> <ul style="list-style-type: none"> • Loss or damage caused by flood for a period of 7 days from the date cover was initially provided by us, unless this policy is replacing another policy with equivalent flood cover and there has been no gap in cover or change to the sum insured, or you have entered into a contract to purchase the property and the risk has passed to you as purchaser. • Loss or damage caused by or resulting from actions or movements of the sea or high water (other than storm surge and tsunami). • Loss or damage to retaining walls, paths, driveways, bridges or landscaping. • Loss or damage to the extent that it is caused by or arises from: <ul style="list-style-type: none"> – defects in design, structure, materials, workmanship or construction at the insured site (or strata site if your home is under a strata title or similar plan) which you knew about or should reasonably have known about at the time of the loss or damage arising, or – failure to take reasonable steps to keep the insured property well maintained, structurally sound and secure (refer to <i>Tips to keep your home in great shape</i> on page 3 for examples of some of the steps you can take). • Loss or damage that is predominantly caused by or arises from: <ul style="list-style-type: none"> – hydrostatic pressure, or – wear and tear, or gradual deterioration. 			

**Impact.**

	Essential Care	Quality Care	Premier Care
<p>Covered.</p> <p>Loss or damage caused by collision with your building and/or contents by:</p> <ul style="list-style-type: none"> • falling trees or branches, • any vehicle or its load, except to the extent that the vehicle was in your control, • watercraft, aircraft, spacecraft, or parts or items falling from them, except to the extent that the craft was in your control, • model or toy aircraft, drones, or parts of items falling from them, except to the extent that the craft or drone was in your control, • space debris, • a television or radio aerial or its mast, or • any animal, except those kept at the insured site. 	✓	✓	✓
<p>Not covered.</p> <ul style="list-style-type: none"> • Loss or damage that is caused by or arises from tree lopping or felling if done by you or with your consent. • Loss or damage that is predominantly caused by or arises from: <ul style="list-style-type: none"> – acts by you, or someone acting with your consent, which are intended to cause loss or damage to your property, – unlawful acts by you or someone acting with your consent, – any person, organisation or authority who legally damages or destroys or confiscates any insured property, unless it's a direct result of an insured event or to mitigate loss to your property, – malicious acts of a person who is on the insured site with your consent or the consent of someone who lives at the insured site, or – wear and tear, or gradual deterioration. • Loss or damage to the extent that it is caused by or arises from: <ul style="list-style-type: none"> – defects in design, structure, materials, workmanship or construction at the insured site (or strata site if your home is under a strata title or similar plan) which you knew about or should reasonably have known about at the time of the loss or damage arising, or – failure to take reasonable steps to keep the insured property well maintained, structurally sound and secure (refer to <i>Tips to keep your home in great shape</i> on page 3 for examples of some of the steps you can take). 			

**Lightning.**

	Essential Care	Quality Care	Premier Care
Covered. Loss or damage caused by lightning.	✓	✓	✓

**Malicious acts and unrest.**

Covered. Loss or damage caused by	✓	✓	✓
<ul style="list-style-type: none"> • malicious acts, or • industrial or political unrest, or attempts by a legal authority to stop or control industrial or political unrest. 			
Not covered.			
<ul style="list-style-type: none"> • Any loss or damage that is predominantly caused by or arises from: <ul style="list-style-type: none"> – acts by you, or someone acting with your consent, which are intended to cause loss or damage to your property, – unlawful acts or use by you or someone acting with your consent, – acts by someone who is at the site with your consent, or the consent of someone who lives at the insured site, – any person, organisation or authority who legally damages or destroys or confiscates any insured property, unless it's a direct result of an insured event, or to mitigate loss to your property, – a computer virus, hacking, cyber attack or similar occurrence, or – an accident. • Unless we agree otherwise, your policy will not cover loss or damage if your home has been unoccupied for more than 60 consecutive days. 			



Storm.

	Essential Care	Quality Care	Premier Care
<p>Covered.</p> <p>Loss or damage caused by storm, including cyclone, hail, wind, snow or rain.</p>	✓ Excludes damage to gates, fences and freestanding walls.	✓	✓

Not covered.

- Loss or damage caused by:
 - storm for a period of 48 hours, or
 - cyclone for a period of 5 days,

from the date the cover was initially provided by us, unless the policy is replacing another policy with equivalent storm or cyclone cover and there has been no gap in cover and no change to the sum insured, or you have entered into a contract to purchase the property and the risk has passed to you as purchaser.
- Loss or damage to:
 - retaining walls, paths, driveways, bridges or landscaping,
 - fabric awnings, blinds or shade sails, unless professionally installed and less than 5 years old,
 - plastic liners or covers for swimming pools or spas,
 - water in swimming pools or spas, or
 - external paint or coatings caused by rain.
- Loss or damage caused by or resulting from:
 - gradual deterioration from hail, wind, snow or rain,
 - hail, wind, snow or rain entering the building:
 - while construction work, structural alterations or additions are being carried out,
 - as a result of doors, windows or other man-made openings not being closed, or
 - through an opening not created by the storm or other insured event,
 - water seeping or running through or down the sides of earth or earth fill that is up against your building, or
 - actions or movements of the sea or high water (other than storm surge and tsunami).
- Loss or damage to the extent that it is caused by or arises from:
 - defects in design, structure, materials, workmanship or construction at the insured site (or strata site if your home is under a strata title or similar plan) which you knew about or should reasonably have known about at the time of the loss or damage arising,
 - failure to take reasonable steps to keep the insured property well maintained, structurally sound and secure (refer to *Tips to keep your home in great shape* on page 3 for examples of some of the steps you can take).
- Loss or damage that is predominantly caused by or arises from wear and tear, or gradual deterioration.



Theft

	Essential Care	Quality Care	Premier Care
<p>Covered.</p> <p>Loss or damage caused by theft or attempted theft.</p>	✓ Cover provided for building and contents. For Contents cover, theft is only covered if the theft occurs from a fully enclosed and lockable building at the insured site.	✓ Cover provided for building and contents. For Contents cover, theft is covered if the theft occurs from a fully enclosed and lockable building at the insured site and for up to \$2,000 in the open air at the insured site (refer to page 40).	✓
<p>Not covered.</p> <ul style="list-style-type: none"> Loss or damage if the theft or attempted theft is by you or someone acting with your consent. Unless we agree otherwise, your policy will not cover loss or damage if your home has been unoccupied for more than 60 consecutive days. 			



Accidental breakage of glass.

	Essential Care	Quality Care	Premier Care
<p>Covered.</p> <p>Under Building cover:</p> <p>Accidental breakage of the following items that form part of your building:</p> <ul style="list-style-type: none"> fixed glass, fixed mirrors and skylights, porcelain or ceramic basins, sinks, baths, toilets and toilet cisterns, glass in fixed storage tanks and solar panels, acrylic and fibreglass showers, basins and sinks, light fittings, or glass or ceramic cooktops. <p>Under Contents cover:</p> <p>Accidental breakage of:</p> <ul style="list-style-type: none"> glass that forms part of your furniture at the insured site, hanging wall mirrors (but not handheld mirrors), or items described under Building cover above where you have legal liability as a tenant. 	X	✓	✓
<p>Not covered.</p> <ul style="list-style-type: none"> Accidental breakage of glass that's part of a glasshouse or conservatory. Accidental breakage of the following*: <ul style="list-style-type: none"> television screens or screens on visual display units, glass parts in televisions, radios or other electronic devices, vases or ornaments, or glass that's normally carried by hand. <p>*However, under Premier Care, this is covered under <i>Accidental loss or damage</i> (refer to page 29).</p>			



Electrical motor burnout.

Essential
Care

Quality
Care

Premier
Care

Covered.

Loss or damage to electric motors that are part of your building or contents, caused by an electric current. Examples of items with motors include, but are not limited to, air-conditioners, pool pumps, refrigerators and garage doors.

If we agree to pay a claim, we will cover the cost of repairing or replacing the electric motor, the service call fee and labour charges. If the motor can't be replaced, we will pay the current replacement cost of an equivalent motor of the same specification and standard.

X

✓

✓

Not covered.

- fuses, switches, lighting or heating elements, electrical contacts or protective devices,
- replacing the whole appliance if a motor cannot be replaced,
- replacing worn or damaged parts unless they are part of the insured loss,
- loss or damage that occurs as a result of the motor not working,
- the cost of hiring a replacement appliance or motor,
- motors under any warranty or manufacturers guarantee,
- any parts or labour for motors that are over 15 years old from the date of manufacture, or
- loss or damage to electric motors caused by power surge originating from the supply authority.



Accidental loss or damage.

	Essential Care	Quality Care	Premier Care
<p>Covered.</p> <p>Accidental loss or damage to:</p> <ul style="list-style-type: none"> • your building and/or contents at the insured site, or • your contents while temporarily removed elsewhere in Australia. <p>If loss or damage is caused by any other insured event, you must claim under that section of your policy.</p> <p>For every claim we agree to pay, your excess will be the greater of your basic excess or \$300.</p>	X	X	✓
<p>Not covered.</p> <ul style="list-style-type: none"> • Any loss or damage excluded under the general exclusions or excluded specifically under any insured events, unless otherwise stated. • Loss or damage caused by or arising from: <ul style="list-style-type: none"> – electrical, mechanical or computer breakdown, failure or derangement (other than motor burnout), – rain entering the home while construction work, structural alterations or additions are being carried out, – any process of professional cleaning, repairing, restoring, servicing or renovation, or – a computer virus, hacking, cyber-attack or similar occurrence. • Loss or damage to: <ul style="list-style-type: none"> – glass in a glasshouse or conservatory, – sporting equipment while participating in any organised activity or race, or – photographic equipment while in use underwater. • Loss or damage to contents: <ul style="list-style-type: none"> – stored in any commercial storage facility or sale rooms, – as part of a household removal, or – permanently removed from the property after the first 14 days of cover. 			

4.4 Additional benefits.

This summary of additional benefits is a reference tool only. For further details of the relevant terms and conditions, limits and exclusions on cover, refer to the page numbers shown.

Building additional benefits summary.	Essential Care	Quality Care	Premier Care	Page
Benefits paid in addition to your building sum insured.				
Sum insured safety net	✓ Up to 10% of the sum insured.	✓ Up to 20% of the sum insured.	✓ Up to 30% of the sum insured.	33
Demolition and removal of debris	✓ Up to 10% of the sum insured.	✓ Up to 10% of the sum insured.	✓ Up to 10% of the sum insured.	33
Emergency accommodation	✓ Up to \$10,000.	✓ Up to 10% of the sum insured or the cost of accommodation for up to 12 months in total, whichever is less.	✓ Up to 10% of the sum insured or the cost of accommodation for up to 12 months in total, whichever is less.	33
Benefits paid as part of your building sum insured.				
Professional fees	✓ Up to 10% of the sum insured.	✓ Up to 10% of the sum insured.	✓ Up to 10% of the sum insured.	34
Building laws and regulations	✓	✓	✓	34
Emergency repairs and protection	✓	✓	✓	34
Fire brigade and services charges	✓ Up to \$5,000.	✓ Up to \$5,000.	✓ Up to \$5,000.	34
Gardens and landscaping	X	X	✓ Up to \$10,000.	35
Purchasing a home	X	✓ Up to \$20,000.	✓ Up to \$20,000.	35
Mortgage discharge	X	✓	✓	35
Unsecured renovation materials	X	✓ Up to \$1,000.	✓ Up to \$2,000.	36
Other benefits.				
Locks and keys	X	✓ Up to \$1,000.	✓ Up to \$2,000.	36

Contents additional benefits summary.	Essential Care	Quality Care	Premier Care	Page
Benefits paid in addition to your contents sum insured.				
Sum insured safety net	✓ Up to 5% of the sum insured.	✓ Up to 10% of the sum insured.	✓ Up to 20% of the sum insured.	37
Removal of debris	✓ Up to 10% of the sum insured.	✓ Up to 10% of the sum insured.	✓ Up to 10% of the sum insured.	37
Emergency accommodation	✓ Up to \$5,000.	✓ Up to 10% of the sum insured or the cost of accommodation for up to 12 months in total, whichever is less.	✓ Up to 10% of the sum insured or the cost of accommodation for up to 12 months in total, whichever is less.	37
Emergency accommodation for pets	×	✓ Up to \$5,000.	✓ Up to \$5,000.	38
Funeral expenses	×	✓ Up to \$10,000.	✓ Up to \$15,000.	38
Benefits paid as part of your contents sum insured.				
Emergency storage of contents	×	✓ Up to 10% of the sum insured or the cost of storage for up to 12 months in total, whichever is less.	✓ Up to 10% of the sum insured or the cost of storage for up to 12 months in total, whichever is less.	38
Contents moved permanently to a new property	✓	✓	✓	38
Contents in a commercial storage facility	×	✓	✓	39
Fire brigade and services charges	✓ Up to \$5,000.	✓ Up to \$5,000.	✓ Up to \$5,000.	39

Contents additional benefits summary.	Essential Care	Quality Care	Premier Care	Page
Contents in the open air at the insured site	X	✓ Up to \$2,000 for loss or damage caused by the insured events of storm, flood and theft, and up to 20% of the sum insured for all other insured events.	✓ Covered under <i>Accidental loss or damage</i> . Refer to page 29.	40
Contents temporarily removed to other places in Australia	✓ Up to 10% of the sum insured	✓ Up to 20% of the sum insured.	✓ Covered under <i>Accidental loss or damage</i> . Refer to page 29.	40
Computer records	X	X	✓ Up to \$3,000.	41
Other benefits.				
Spoilage of food and medicine	X	✓ Up to \$500.	✓ Up to \$2,000.	41
Contents in transit	X	X	✓ Up to 20% of the sum insured.	41

If you have Premier Care and, in the event of a claim, the benefit payable would be greater under Quality Care or Essential Care, then the greater benefit will be paid. Similarly, if you have Quality Care and, in the event of a claim, the benefit payable under Essential Care would be greater, then the greater benefit will be paid.

Building additional benefits.

If we agree to pay a claim for loss or damage to your building, we will also pay for the additional benefits listed below that are directly related to that loss or damage.

Some additional benefits are paid in addition to the sum insured and some are paid as part of the sum insured.

Benefits paid in addition to your building sum insured.

Sum insured safety net.	Essential Care	Quality Care	Premier Care
<p>If the cost to repair or replace your building is more than your sum insured, we will cover the extra cost up to the sum insured safety net to:</p> <ul style="list-style-type: none"> • repair the damage, or • replace your building. <p>The sum insured safety net does not increase your sum insured or any other additional benefit.</p> <p>If you increase your building's value (by renovating or extending, for example), you may need to increase your sum insured to avoid being underinsured.</p>	<p>✓</p> <p>Up to 10% of the sum insured.</p>	<p>✓</p> <p>Up to 20% of the sum insured.</p>	<p>✓</p> <p>Up to 30% of the sum insured.</p>

Demolition and removal of debris.

<p>We will cover the cost of any necessary demolition of your home or parts of it, and the removal of resulting debris from the insured site (including any trees or branches that have caused damage to your building or are an imminent threat of causing damage and need to be cut down).</p>	<p>✓</p> <p>Up to 10% of the sum insured.</p>	<p>✓</p> <p>Up to 10% of the sum insured.</p>	<p>✓</p> <p>Up to 10% of the sum insured.</p>
<p>Not covered.</p> <ul style="list-style-type: none"> • The cost of removing tree stumps still in the ground. 			

Emergency accommodation.

<p>If we agree to pay a claim for loss or damage to your building and your home is unliveable, we will cover the cost of similar alternative accommodation for you and any other insureds.</p> <p>This expense will only be paid if you actually incur costs for emergency accommodation, and only while your home remains unliveable.</p> <p>If assistance is required for a bond payment for your emergency accommodation, we will pay the reasonable cost of the bond then recoup that amount as a deduction from any benefit payment.</p>	<p>✓</p> <p>Up to \$10,000.</p>	<p>✓</p> <p>Up to 10% of the sum insured or the cost of accommodation for up to 12 months in total, whichever is less.</p>	<p>✓</p> <p>Up to 10% of the sum insured or the cost of accommodation for up to 12 months in total, whichever is less.</p>
---	---------------------------------	--	--

Benefits paid as part of your building sum insured.

	Essential Care	Quality Care	Premier Care
Professional fees. We will cover the cost of employing an architect, surveyor, engineer, building consultant, lawyer and/or other professional who might be necessary for the repair or replacement of your building following an insured event.	✓ Up to 10% of the sum insured.	✓ Up to 10% of the sum insured.	✓ Up to 10% of the sum insured.

Building laws and regulations.

We will cover the costs incurred to comply with local or state government building laws, bylaws, regulations and standards following the destruction or partial destruction of your home. We will only pay those costs that directly apply to the part of your building that has been damaged.	✓	✓	✓
Not covered. The costs relating to building work that a relevant authority required you to undertake before the loss or damage occurred.			

Emergency repairs and protection.

We will cover the reasonable costs incurred for any emergency repairs and protection necessary at the insured site to prevent further loss or damage to your property or to your neighbouring property.	✓	✓	✓
---	---	---	---

Fire brigade and services charges.

We will cover the amount an organisation may charge you for: <ul style="list-style-type: none"> • fire brigade services, • emergency services, and/or • recharging of fire extinguishers or replacement of used firefighting equipment. 	✓ Up to \$5,000.	✓ Up to \$5,000.	✓ Up to \$5,000.
--	---------------------	---------------------	---------------------

	Essential Care	Quality Care	Premier Care
<p>Gardens and landscaping.</p> <p>If we agree to pay a claim for loss or damage caused by any of the following insured events – fire, explosion, lightning, earthquake, malicious acts and unrest, impact or storm (not including rain), we will cover the costs of replacing landscaping and outdoor decorations of the same or similar variety and of a size suitable to commence the re-establishment of your garden.</p> <p>We will only pay this benefit if your trees, plants and shrubs:</p> <ul style="list-style-type: none"> • were living specimens before the event, and • were not being produced for commercial purposes. 	X	X	✓ Up to \$10,000.
<p>Not covered.</p> <ul style="list-style-type: none"> • flower, vegetable and herb gardens, • non-permanent trees, plants and shrubs (i.e. those in pots), or • the grown value of the tree, plant or shrub at the time of the event. 			

Purchasing a home.

<p>If you have entered into an agreement to purchase a property and taken out a building insurance policy with us, but have not yet occupied the building, we will cover any loss or damage to fixtures and fittings, fixed carpets and window coverings inside the home caused by an insured event.</p>	X	✓ Up to \$20,000.	✓ Up to \$20,000.
--	---	----------------------	----------------------

Mortgage discharge.

<p>If your home is totally destroyed by an insured event, we will cover the reasonable administrative and legal costs associated with discharging any mortgages you have over the property.</p>	X	✓ Up to the sum insured.	✓ Up to the sum insured.
<p>Not covered.</p> <p>Any penalty or exit fees associated with paying out your mortgage.</p>			

	Essential Care	Quality Care	Premier Care
<p>Unsecured renovation materials.</p> <p>While you're renovating your building, we will cover unsecured fixtures, fittings and materials at the insured site due to be fitted to your building for loss or damage caused by an insured event.</p> <p>You must notify us before or as soon as you become aware that there are plans to renovate a building or buildings on the insured site. Unless we agree otherwise, your policy will not provide cover while construction, renovations, structural alterations or, additions, demolitions or relocations are being carried out.</p>	X	✓ Up to \$1,000.	✓ Up to \$2,000.
<p>Not covered.</p> <p>The cost of replacing sand, gravel or soil.</p>			

Other benefits.

Locks and keys.

<p>If the keys to your home are stolen, we will cover the cost of replacing or modifying your building's external locks. This includes electronic keys and garage door openers.</p> <p>An insured event does not have to occur to claim this benefit.</p>	X	✓ Up to \$1,000.	✓ Up to \$2,000.
---	---	------------------------	------------------------

Contents additional benefits.

If we agree to pay a claim for loss or damage to your contents, we will also pay for the additional benefits listed below that are directly related to that loss or damage.

Some additional benefits are paid in addition to the sum insured and some are paid as part of the sum insured.

Benefits paid in addition to your contents sum insured.

Sum insured safety net.	Essential Care	Quality Care	Premier Care
<p>If the cost to repair or replace your contents is more than your sum insured, we will cover the extra cost up to the sum insured safety net to:</p> <ul style="list-style-type: none"> • repair damage to your contents, and/or • replace your contents. <p>The sum insured safety net does not increase your sum insured or any other additional benefit.</p> <p>If you increase the value of your contents (by purchasing new items for example), you may need to increase your sum insured to avoid being underinsured.</p>	<p>✓</p> <p>Up to 5% of the sum insured.</p>	<p>✓</p> <p>Up to 10% of the sum insured.</p>	<p>✓</p> <p>Up to 20% of the sum insured.</p>

Removal of debris.

<p>We will cover the cost of removing any contents debris from the insured site following a loss.</p>	<p>✓</p> <p>Up to 10% of the sum insured.</p>	<p>✓</p> <p>Up to 10% of the sum insured.</p>	<p>✓</p> <p>Up to 10% of the sum insured.</p>
---	---	---	---

Emergency accommodation.

<p>If your home is unliveable, we will cover the cost of similar alternative accommodation for you and any other insureds.</p> <p>This expense will only be paid if you actually incur costs for emergency accommodation, and only while your home remains unliveable.</p> <p>If assistance is required for a bond payment for your emergency accommodation, we will pay the reasonable cost of the bond and then recoup that amount as a deduction from any benefit payment.</p> <p>If we also insure your building under this or any other policy, payment for emergency accommodation will be made under your Building cover only, and this additional contents benefit will not apply.</p>	<p>✓</p> <p>Up to \$5,000.</p>	<p>✓</p> <p>Up to 10% of the sum insured or the cost of accommodation for up to 12 months in total, whichever is less.</p>	<p>✓</p> <p>Up to 10% of the sum insured or the cost of accommodation for up to 12 months in total, whichever is less.</p>
--	--------------------------------	--	--

	Essential Care	Quality Care	Premier Care
<p>Emergency accommodation for pets.</p> <p>If your home is unliveable, we will cover the cost of temporary accommodation for your pets only while your home remains unliveable.</p> <p>This expense will only be paid when the animals are your pets and you actually incur costs for emergency pet accommodation, and if you intend to return to your home after it's repaired or replaced.</p> <p>We cannot guarantee that the emergency accommodation arranged for your pets will be in the same location as any emergency accommodation arranged for you and any other insureds.</p>	X	✓ Up to \$5,000.	✓ Up to \$5,000.

Funeral expenses.

<p>If any person defined as 'you', 'your' or 'insured' is fatally injured as a result of an accident caused by an insured event at the insured site, we will pay the estate of the deceased person for their reasonable funeral expenses.</p>	X	✓ Up to \$10,000.	✓ Up to \$15,000.
---	---	----------------------	----------------------

Benefits paid as part of your contents sum insured.

Emergency storage of contents.

<p>If your home is unliveable, we will cover the reasonable costs of removing and storing your contents in a storage facility.</p> <p>We will continue to cover your contents while they're held in a storage facility for any of the insured events except for <i>Accidental loss or damage</i>.</p>	X	✓ Up to 10% of the sum insured or the cost of storage for up to 12 months in total, whichever is less.	✓ Up to 10% of the sum insured or the cost of storage for up to 12 months in total, whichever is less.
---	---	---	---

Contents moved permanently to a new property.

<p>If you're moving permanently to a new home within Australia, your contents are covered at both your current home at the insured site and your new home for 14 days from the time you first move part of your contents.</p>	✓ Up to the sum insured.	✓ Up to the sum insured.	✓ Up to the sum insured.
---	-----------------------------	-----------------------------	-----------------------------

	Essential Care	Quality Care	Premier Care
<p>Contents in a commercial storage facility.</p> <p>We will cover loss or damage to contents in a commercial storage facility in Australia as a result of an insured event. This cover is only provided if the commercial storage facility is:</p> <ul style="list-style-type: none"> lockable, only accessible by you or someone authorised by you, and fully enclosed by walls (including doors), floor and a roof. <p>We will only cover items in storage if:</p> <ul style="list-style-type: none"> you contact us and advise us you are storing your contents, you provide us with the address where the contents are being stored, you provide us with the value of the items being stored, and we agree to cover them. <p>Unless we agree otherwise, your policy will not provide cover while your contents are stored at a commercial storage facility.</p>	X	✓ Up to the sum insured.	✓ Up to the sum insured.
<p>Not covered.</p> <ul style="list-style-type: none"> jewellery and watches, artwork, collections or collectables, accidental loss or damage, or contents kept in a shipping container. 			
<p>Fire brigade and services charges.</p> <p>We will cover the amount an organisation may charge you for:</p> <ul style="list-style-type: none"> fire brigade services, emergency services, and/or recharging of fire extinguishers or replacement of used firefighting equipment. <p>If we also insure your building under this or any other policy, payment for fire brigade and services charges will be made under your Building cover only, and this additional contents benefit will not apply.</p>	✓ Up to \$5,000.	✓ Up to \$5,000.	✓ Up to \$5,000.

	Essential Care	Quality Care	Premier Care
<p>Contents in the open air at the insured site.</p> <p>We will cover loss or damage caused by an insured event to contents in the open air at the insured site.</p>	X	✓ Up to \$2,000 for loss or damage caused by the insured events of storm, flood and theft, and up to 20% of the sum insured for all other insured events.	✓ Covered under <i>Accidental loss or damage</i> . Refer to page 29.

Contents temporarily removed to other places in Australia.

<p>We will cover loss or damage to your contents while they're temporarily removed from the insured site, and still within Australia, for up to 90 days, and only if the loss or damage is caused by:</p> <ul style="list-style-type: none"> • any insured event while your contents are securely locked within the walls of another home, hospital, clinic, or nursing home, • any insured event while your contents are in a securely locked room in any hotel, motel, club or resort which you were renting for accommodation, • any insured event while your contents are at a temporary evacuation centre, or • an insured event other than storm, flood or theft while your contents are elsewhere in Australia. 	✓ Up to 10% of the sum insured.	✓ Up to 20% of the sum insured.	✓ Covered under <i>Accidental loss or damage</i> . Refer to page 29.
<p>Not covered.</p> <p>Unless your policy states otherwise, this additional benefit won't cover:</p> <ul style="list-style-type: none"> • contents in any furniture storage facility or sale rooms, or as part of a household removal, or • contents in any other location other than those listed above. 			

	Essential Care	Quality Care	Premier Care
<p>Computer records.</p> <p>If your computer, which forms part of your contents, suffers loss or damage as a result of fire, explosion, earthquake, impact, storm, flood or theft, and we agree to pay for a replacement computer, we will cover the reasonable costs of re-establishing your records and data lost as a result of the event.</p>	X	X	✓ Up to \$3,000.
<p>Not covered.</p> <p>Re-establishment costs for any records or data that:</p> <ul style="list-style-type: none"> • were held on illegal copies of software, or • can be restored from other media not damaged or destroyed by the event. 			

Other benefits.

Spoilage of food and medicine.

<p>We'll cover the cost of replacing perishable foods and medicine that are damaged at your home if caused by:</p> <ul style="list-style-type: none"> • your fridge/freezer accidentally breaking down, • accidental damage to your fridge/freezer, or • the public electricity supply failing to reach your fridge/freezer because of an accident. <p>An insured event does not have to occur to claim this additional benefit.</p>	X	✓ Up to \$500.	✓ Up to \$2,000.
<p>Not covered.</p> <ul style="list-style-type: none"> • loss caused by the public electricity supply failing due to industrial action or civil commotion, • loss when your fridge or freezer is over 15 years old, or • loss when you deliberately cause the food or medicine to spoil. 			

Contents in transit.

<p>If you're permanently moving to a new home in Australia, we will cover your contents for loss or damage while being transported if the vehicle being used to transport your contents is:</p> <ul style="list-style-type: none"> • damaged or destroyed by fire, • stolen, or • involved in a collision. <p>An insured event does not have to occur to claim this additional benefit.</p>	X	X	✓ Up to 20% of the sum insured.
--	---	---	------------------------------------

4.5 Contents with special limits.

The following items have a maximum amount payable for any one claim. The amounts are listed below and are included within your Contents sum insured.

Contents with special limits.	Essential Care	Quality Care	Premier Care
Jewellery and watches	Up to \$500 per item/Up to \$3,000 in total for all items in one claim.	Up to \$1,000 per item/Up to \$5,000 in total for all items in one claim.	Up to \$5,000 per item/Up to \$20,000 in total for all items in one claim.
Sporting equipment	Up to \$2,000 in total.	Up to \$3,500 in total.	Up to \$5,000 in total and up to \$2,000 for <i>Accidental loss or damage</i> .
Electronic audio, visual and computer equipment	Up to \$3,000 in total.	Up to the sum insured.	Up to the sum insured.
If you'd like to insure any of the items listed above for a higher amount than permitted under the relevant limits, you can add optional Personal Valuables cover. Refer to pages 44 to 45 for details. Electronic audio, visual and computer equipment can only be added to Optional Personal Valuables cover if they are portable, handheld items.			
Artwork, collections and collectibles	Up to \$3,000 in total.	Up to \$10,000 in total.	Up to \$20,000 in total.
If you'd like to insure any of the items listed above for a higher amount than permitted under the relevant limits, you can ask for them to be listed as individual artworks, collections or collectibles within your contents sum insured and nominate an amount for each item.			
CDs, DVDs, videos, Blu-ray discs, computer games, consoles and software	Up to \$1,000 in total.	Up to the sum insured.	Up to the sum insured.
Unset gems, stones and unattached charms	Up to \$500 in total.	Up to \$1,000 in total.	Up to \$2,000 in total.
Unattached motor vehicle and marine pleasure craft accessories and parts (including keys)	X	Up to \$750 in total.	Up to \$1,000 in total.
Money and other negotiable financial documents	X	Up to \$750 in total.	Up to \$1,250 in total.
Documents	X	Up to \$1,000 in total.	Up to \$2,000 in total.

Contents with special limits.	Essential Care	Quality Care	Premier Care
Property belonging to guests or visitors	X	Up to \$2,000 in total.	Up to \$5,000 in total for property located at the insured site only.
Home office equipment including property used in connection with a home office, such as mobile telephones and computer equipment	X	Up to \$10,000 in total.	Up to \$15,000 in total for property located at the insured site only/Up to \$5,000 in total elsewhere in Australia.
Tools and equipment of trade	X	Up to \$2,000 in total.	Up to \$3,000 in total for property located at the insured site only/Up to \$1,000 in total elsewhere in Australia.
Limits on the items listed above cannot be increased.			

5 Optional Personal Valuables cover.

Optional extra cover for your valuables within Australia and worldwide for up to 90 days, commencing from the date you leave home.

If you want more cover for your portable valuables in and away from home, you can add Optional Personal Valuables cover to your Contents cover. This cover is available for owner occupiers and tenants.

You can choose to have unspecified cover, specify your items individually, or have a combination of both.

Electronic audio, visual and computer equipment can only be added to Optional Personal Valuables cover if they are portable, handheld items.

What are considered personal valuables under your cover?

Personal valuables means:

- clothing, toiletries, cosmetics,
- jewellery and watches, including smart watches (but not unset gems, stones or unattached charms which are covered in *Contents with special limits* in section 4.5),
- sunglasses, spectacles and contact lenses,
- wallets, purses, handbags, travel bags, luggage,
- personal portable medical equipment – for example dentures, hearing aids walking sticks and insulin pumps,
- mobile telephones, electronic diaries and devices and their associated accessories,
- photographic equipment, video cameras, binoculars and telescopes,
- laptops, mobile and portable computing devices, and portable data storage devices,
- calculators, and personal handheld navigational equipment,
- portable battery operated radio, sound and visual entertainment devices,

- portable shavers and portable hair styling equipment,
- books, pens, compendiums,
- musical instruments,
- prams, strollers, baby capsules and carriers,
- sporting equipment (but not motorised sporting equipment, or firearms),
- non-motorised watercraft up to four metres in length,
- surfboards, sailboards, surf-skis, canoes and kayaks, irrespective of length, and
- portable camping and fishing equipment, picnic sets and travel blankets.

What are not considered personal valuables under your cover?

Personal valuables do not mean:

- any item used for trade, business purposes or any items used professionally, or
- any item not listed as personal valuables above.

How does personal valuables cover work?

We will insure your personal valuables against loss or damage caused by the following events if they occur during the period of insurance.

Personal Valuables.	Unspecified	Specified
<p>Covered.</p> <ul style="list-style-type: none"> covered for the insured events noted on pages 20 to 28, and accidental loss or damage 	<p>When you choose unspecified cover, your personal valuables are not listed separately and are covered up to your chosen limits of cover as listed on your policy schedule.</p>	<p>When you choose specified cover, your personal valuables are listed separately on your policy, with individual descriptions and values, and are covered up to that specified value.</p>
<p>Not covered.</p> <p>Loss or damage:</p> <ul style="list-style-type: none"> caused by theft by you or someone acting with your consent, caused by theft by someone who is at the insured site with your consent or the consent of someone who lives at the insured site, caused by any process of cleaning, repairing, altering, restoring, servicing or renovating, caused by electrical, mechanical or computer breakdown or failure, when the theft is from an unlocked and unattended motor vehicle or caravan, other than at the insured site, to sporting equipment while participating in any organised activity or race, or to photographic equipment or video cameras while in use underwater or while in use with a drone. 		

Unspecified Personal Valuables cover limit options:

When you choose unspecified cover your personal valuables are not listed separately and are covered up to your chosen limits of cover as listed on your policy schedule.

Example - select \$500 per item limit with a total claim limit of \$1,500.

Your personal valuables excess.

For every Personal Valuables claim we agree to pay your excess will be \$100, unless your claim is part of a Building cover or Contents cover claim for the one insured event, in which case the higher excess applies.

Example – if you lose a specified item while away from home, the excess applied will be \$100. If the item was stolen from your home, with other possessions insured under your Contents policy, the excess you selected for your Contents cover will be applied, rather than the \$100 excess for your specified item.

6 Other cover.

6.1 Legal Liability cover.

Legal Liability cover can help protect you if a claim is made against you for:

- injury, illness or death to someone other than you or any other insured, or
- loss or damage to property owned or controlled by someone other than you or any other insured.

If you have Building cover:	If you have Contents cover:
Legal Liability cover covers you for incidents which take place at the insured site.	Legal Liability cover covers you for incidents which take place anywhere in Australia.

The most we will pay is \$20 million, including the legal costs of representing or defending you.

If you or another insured have another Home and Contents Insurance policy or Landlord Insurance policy with us, the most we will pay under all such policies for any one occurrence or series of occurrences arising from the same cause is \$20 million.

What does Legal Liability cover include?	Essential Care	Quality Care	Premier Care
<p>Covered.</p> <ul style="list-style-type: none"> • a claim resulting from an occurrence for which you are legally liable, which happens during your period of insurance, • all compensation costs, legal fees and expenses that you're legally obliged to pay as a result of such a claim, and • your reasonable legal fees and expenses that we incur on your behalf, or that you incur with our prior written consent as a result of such a claim, or legal costs and expenses which are awarded against you. <p>Note: You can only claim for legal fees and expenses if we have agreed to them in writing before you incur them.</p>	✓ Up to \$20 million	✓ Up to \$20 million	✓ Up to \$20 million
<p>Not covered.</p> <ul style="list-style-type: none"> • Any legal liability that arises: <ul style="list-style-type: none"> – from bodily injury, illness or death of you or any other insured, – from loss or damage to property that is owned or controlled by you or any other insured, – from bodily injury, illness or death of your employees arising out of their employment by you, – from acts or omissions by you or someone with your consent, if the acts are illegal or unlawful or are intended to be done or are done with reckless disregard for the consequences, 			

Continued next page

Not covered (continued).

- out of your employment of domestic and other workers,
- out of, or in connection with, any business, profession, or occupation carried on by you (e.g. use of your property as a farm, guest house, display home, club house, boarding house or commune) other than renting or leasing out of the home at the site and/or use of part of the premises as a home office, or for ad hoc babysitting or tutoring,
- from breach of any professional duty owed by you to any person that arises in the course of any business, profession or occupation carried on by you,
- from loss or damage to any property that is owned or controlled by you or your employees,
- because you are liable only under contract or because you have agreed or accepted liability without our agreement first,
- in the course of construction of your building or from building work to your building costing more than \$50,000,
- because you own or occupy any land or building other than the building or insured site covered by this policy,
- in connection with the common property where the home is part of a strata, group, company or community title plan,
- because of vibration or interference with any land, buildings or property,
- from an animal other than a horse, dog or cat, or other domestic pet kept at the insured site,
- from a dog if it was declared dangerous by a relevant authority prior to the incident resulting in the claim against you,
- from the transmission of any disease, or the supply of any drug,
- from asbestos or any product containing asbestos,
- as a result of any actual, alleged or threatened contamination or pollution of any property, land, the atmosphere or any watercourse or body of water (including groundwater) other than arising from an occurrence which:
 - is neither reasonably expected or intended by you, and
 - is a consequence of a sudden cause which takes place at a clearly identifiable time during the period of insurance,
- from your participation in any professional sport,
- from the use or ownership of motorised watercraft and other watercraft more than four metres in length (other than surfboards, sailboards, surf-skis, canoes and kayaks),
- from the use or ownership of motorised vehicles, go-karts, mini-bikes, trail bikes, any registrable vehicle, caravans and trailers (other than wheelchairs, mobility scooters, golf buggies, ride-on lawn mowers, children's ride-on toys or mini-bikes where the engine capacity is not more than 50cc),
- from the use or ownership of aircraft, drones or aircraft landing areas, micro-lights or hang gliders (other than model or toy aircraft, provided that they are being used legally),
- due to earth or soil movement (other than earthquake) including landslide, subsidence, erosion, heave, or
- from tree(s) on the insured site where the roots cause damage to someone else's property.

Continued next page

Not covered (continued).

- Any legal liability for any loss or damage that is caused by or arises from:
 - war, invasion, act of foreign enemy, hostilities and war-like operations (whether war be declared or not), civil war, mutiny, popular or military rising, insurrection, rebellion, revolution or military or usurped power,
 - any act of terrorism resulting from, or arising out of or in connection with, biological, chemical, radioactive or nuclear pollution, contamination or explosion,
 - nuclear weapons material or ionising radiation or contamination by radioactivity from any nuclear fuel or nuclear waste or from the combustion of nuclear fuel, or
 - chemical or biological materials or contamination caused by chemical or biological materials.
- Any legal liability that arises in connection with a computer system, hardware, programme, software, data, information repository, microchip, integrated circuit or similar device in computer equipment or non-computer equipment, or from a computer virus, hacking, cyber-attack or similar occurrence.
- Claims made against you because you failed to insure against property damage required by relevant state or territory strata title or group property laws.
- Any penalties, fines, punitive, exemplary or aggravated damages for which you are liable.
- Actions brought against you in a court outside Australia or a court that applies other than Australian law.
- Legal liability incurred after you cease to be an owner of the insured site.
- Legal liability which is covered by a building insurance policy intended to replace this policy.
- Legal liability incurred by you as the owner or occupier of the site as a result of an occurrence during any period when the site is deemed uninhabitable by us or a regulatory authority, except in the case of an insured event covered in section 4.3 pages 19 to 29. In this case cover will cease immediately if:
 - construction, renovations, structural alterations or additions, demolitions, or relocations commences on the insured property,
 - you sell the home, from the date risk transfers upon the sale of the insured property, or
 - you take out a new policy for either building or liability insurance at that insured site.
- Legal liability that arises after we have paid a claim under your policy that is for the total sum insured (unless otherwise stated).

6.2 Domestic Workers' Compensation cover.

This cover only applies to properties in Tasmania, Western Australia and the Australian Capital Territory, and only if your current schedule indicates you have Domestic Workers' Compensation cover.

Domestic Workers' Compensation.	Essential Care	Quality Care	Premier Care
<p>This cover is intended for any domestic workers performing domestic work related to the running of your home (examples of domestic duties may include ironing, gardening, nannies), who may be injured whilst working at the insured site and who are deemed a worker under the relevant legislation in Tasmania, Western Australia or the Australian Capital Territory.</p> <p>It does not include cover for any workers engaged in a business you run or own, or private contractors performing work at your insured site (example, a registered electrician performing work at your home).</p> <p>Full details of the coverage are outlined in the policy wording:</p> <p>ACT www.einsure.com.au/wb/redirect/PolicyDoc-ACTEmployerIndemnityPolicy</p> <p>TAS www.einsure.com.au/wb/redirect/PolicyDoc-TASEmployerIndemnityPolicy</p> <p>WA www.einsure.com.au/wb/redirect/PolicyDoc-WAEmployerIndemnityPolicy</p>	X	✓	✓
<p>What's covered.</p> <p>Domestic Workers' Compensation cover is a separate cover issued by Allianz Australia Insurance Limited and is provided under the relevant Workers' Compensation legislation in Tasmania, Western Australia, and the Australian Capital Territory. For details of what is covered and what is not covered, please see the policy wording at:</p> <p>ACT www.einsure.com.au/wb/redirect/PolicyDoc-ACTEmployerIndemnityPolicy</p> <p>TAS www.einsure.com.au/wb/redirect/PolicyDoc-TASEmployerIndemnityPolicy</p> <p>WA www.einsure.com.au/wb/redirect/PolicyDoc-WAEmployerIndemnityPolicy</p>			

This PDS is not a product disclosure statement for workers' compensation cover.

7 Lodging a claim.

When something happens to your home and the things you love, we know you'll want help fast. So lodging a claim with us is simple. Call us 24 hours a day, 7 days a week and we'll take details of your claim over the phone, or you can submit your claim online. See the back cover of the PDS for contact details.

Step 1

Make sure you're safe.

In an emergency call:

- Police/Fire/Ambulance: **000**
- Your State Emergency Services (SES) for flood and storm emergencies: **132 500**



Step 2

Make sure your property is safe.

Where possible, and if safe to do so, try to prevent further loss or damage. For example, if there is a hole in your roof arrange for it to be covered to prevent further damage from rain.



Step 3

Call the Police.

If the damage is malicious, property has been stolen or lost, or your home has been entered illegally, call the police.



Step 4

Call us or lodge a claim online.

Once you are safe and you've contacted the police (if necessary), call us with details of what has happened. For emergency assistance we are available 24 hours a day, 7 days a week.

What you must not do.

You must not do any of the following without our consent or we may refuse or reduce a claim:

- accept or admit liability, or make any offer or payment,
- attempt to settle or defend the claim,
- commence any legal proceedings, or
- dispose of damaged goods unless directed to do so by a government authority.

You can only make a claim if an event included in one of the policies or options you have chosen (or any variations we have agreed to) occurs during your period of insurance.

7.1 What we will do when you make a claim.

Ask you to provide access and information.

When we ask, you will need to:

- provide us with access and a reasonable time to inspect the loss or damage before you allow anyone to fix or interfere with it, unless emergency repairs are required to prevent further loss, and
- provide us with reasonable proof of ownership and evidence of the value of the property and of the costs of rectifying the loss or damage. If it costs you to provide this evidence, we will not pay for this. For further details on *Evidence of ownership, value and loss*, refer to page 52.

Decide on your claim.

As long as no further information, assessment or investigation is needed, we will accept or deny your claim and let you know the outcome.

If we do need further information, assessment or investigation, we will:

- tell you the detailed information we need to make a decision on your claim,
- if necessary, appoint an assessor or investigator, and
- provide an estimate of the time required to make a decision on your claim.

Ask whether you're registered for GST.

You need to tell us:

- if you were entitled to claim any input tax credits for GST purposes on the premiums for the policy under which you are making a claim, and
- if you would be entitled to claim input tax credits on the replacement or repair of your property.

Appoint an assessor or investigator.

We may appoint an assessor to assess the loss or damage from an event. We may also appoint an investigator to investigate the circumstances that led to the event.

Require you to pay an excess.

You are required to pay an excess for every claim we agree to pay. The amount of excess you have agreed to pay is shown in your policy schedule or in this PDS depending on your type of claim. We will either require you to pay the excess before we pay your claim, or deduct the excess from the amount payable to you under your claim.

Pay up to the sum insured.

When we accept your claim, we will only pay up to the sum insured unless we say so in a particular section of the PDS. You may only make a claim if an event included in one of the policies or options you have chosen (or any variations we have agreed to in writing) occurs during your period of insurance.

Recovery.

When someone other than you causes loss, damage, injury or legal liability that is insured, or partly insured, by your policy, you must obtain our consent before seeking to recover any such loss. We have the legal rights you have (subject to the *Insurance Contracts Act 1984*) to recover the amount of your insured loss in these circumstances and, in doing so, may make a claim or conduct, defend or settle any legal action, in your name. You are required to assist us in doing this. We may also take possession of the damaged property and decide what to do with it.

7.2 Evidence of ownership, value and loss.

When you make a claim, we will ask you to provide reasonable evidence:

- that you own the property,
- about the value of the property, and/or
- that the property has been lost, damaged or stolen.

The types of documents and information that will be requested include, but are not limited to:

- proof of purchase – including sales receipts, credit card statements or bank statements showing the purchase transaction details. The proof of purchase should include the item description or code plus the purchase price, date purchased and where the item was purchased,
- model and serial numbers, and original instruction booklets and owner's manuals,
- valuations – a document completed by a professional valuer before the loss occurred, including an item description, specifications and the cost to replace the item in Australian dollars, and/or
- original certificate of authenticity from the manufacturer.

A photograph of your possessions and/or property may be requested as supportive evidence in addition to the above, but will not be accepted as a primary source of evidence of ownership, value and/or loss.

We may request that you provide one or more types of documents as evidence of proof of ownership and value, and to substantiate your loss. If you don't provide us with the proof we request, we may refuse or reduce your claim.

7.3 How we settle your claim.

Repairing or replacing.

When we agree to pay a claim for loss or damage, ordinarily we will agree with you to pay either:

- the reasonable costs of repair, or
- the reasonable costs of replacement to new condition with property of the same size and specification or with items as near to original as is currently possible, or
- a cash amount. If we agree to pay cash, we'll pay the amount it would reasonably cost to repair or replace the property. We'll also let you know the other options available to you to settle your claim.

If you choose to receive a cash amount for the reasonable costs of replacement for property instead of accepting the replacement, and a reasonable replacement is available, the amount we'll pay will be less any discount we would have received from the supplier if we had replaced the property.

If it's not reasonable for us to pay the reasonable costs of repair or replacement for the lost or damaged property, then we can choose to pay a cash amount in settlement of your claim. For example, we may choose to pay a cash amount where:

- your sum insured covers only part of the cost of required repairs or replacement, or
- other non-insured repairs are required before insured repairs can be commenced or completed, or
- it is not safe for us to access or make repairs to the insured property for reasons outside our reasonable control.

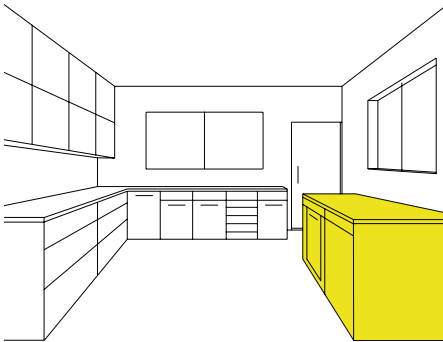
We will pay:

- to match materials, items or construction with those that existed before the loss or damage occurred or, where that is not possible, with the nearest similar materials, items or construction, and
- only those costs that directly apply to the part of your property that has suffered the loss or damage.

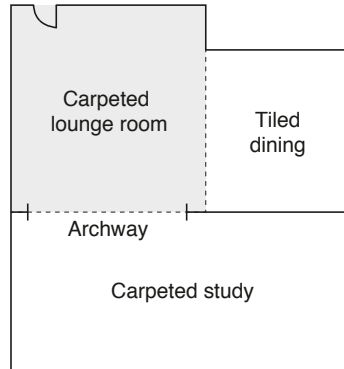
If the loss or damage involves wall coverings, floor coverings or window coverings that are present in more than one room of the home, we'll only repair or replace those wall coverings, floor coverings or window coverings in the room or rooms, hall or passageway where the damage occurred.

However, if such loss or damage involves tiled or timber floor or wall coverings, we'll only pay up to a maximum of \$1,000 to match undamaged tiled or timber wall or floor coverings in the room or rooms, hall or passageway where the damage occurred to create a uniform appearance.

Example 1: We will only cover the repairs or replacement to the damaged section of the kitchen but not to replace the entire kitchen to match or create a uniform appearance.



Example 2: We will only cover the room or rooms, hall or passageway where the damage occurred. For example we will only cover the carpet in the lounge room where the damage occurred but not carpet in the study.



If the loss or damage involves an item which is a part of a pair, set, collection, furniture suite or setting, we'll only pay the reasonable costs to repair or replace the item or the part of it lost or damaged and not for any special value it may have as a pair, set, collection, furniture suite or setting.

We may choose to reduce your claim amount by the extent (if any) to which you are entitled to claim any input tax credits for GST purposes. This will be reduced from any settlement paid for the purposes of replacing or repairing any insured property to which you are entitled to claim input tax credits for.

If repair or replacement is not commenced within 6 months from the date of the event, any increases in costs due to any unreasonable delay by you must be paid by you unless we agree in writing to a longer term.

Repair Guarantee.

When we select a repairer for you, we guarantee that the work and materials will be of a reasonable quality. We won't guarantee any repairs if you choose your own repairer.

We won't guarantee any reasonably expected loss or damage to the materials, such as wear and tear, gradual deterioration or fading.

We will not pay a claim when:

- the claim is excluded by specific policy exclusions (refer to the insured event for details of applicable specific exclusions) or by any of the *General exclusions* listed on pages 15 and 16.

We may refuse or reduce a claim if:

- you have failed to take reasonable care to do all that is required of you under the policy,
- you have not taken reasonable care to maintain and protect the insured property, or prevent injury or death to others, or avoid loss or damage to the property of others,
- you do not take reasonable care to prevent further loss or damage to your property or the insured property of others once an event has occurred,
- you unreasonably fail to give us information we may ask for, or do not immediately send us documents you have or have received relating to the claim,
- you unreasonably fail to co-operate with our investigations,
- you unreasonably fail to assist us with recovering the amount of the claim,
- you made a misrepresentation to us before entering into your policy, or you make a fraudulent claim, and/or
- loss, damage, injury or legal liability is intentionally caused by you or by a person acting with your consent.

How your claim will affect your sum insured.

- **Total loss:** If we pay a claim under part of the policy for the total sum insured, then your insurance cover under the relevant part of the policy will end, and no refund will be given. For example, if we pay the total sum insured for Contents cover, you will no longer have Contents cover, but you will continue to have Building cover (if applicable) and Legal Liability cover.

If you were paying your premium by monthly instalments, the balance of your annual premium will be deducted from your claim.

You'll need to take out new insurance cover for any replacement property.

We'll continue to cover your legal liability as the owner or occupier of the insured site until the end of your period of insurance, unless cancelled earlier. However this cover will cease immediately if:

- construction, renovations, structural alterations or additions, demolitions, or relocations commences on the insured property,
- you sell the land, in which case your policy will not provide any cover from the date risk transfers upon the sale of the insured property, or
- you take out a new policy for either building or liability insurance at the insured site.

If you have a mortgage on the insured property and we're aware of it, we'll notify the mortgagee in the event of a total loss claim and follow their instructions for settling the claim in relation to the mortgage.

- **Partial loss:** If your claim is deemed to be a partial loss (that's anything less than the total sum insured), once your claim has been paid and repairs have been completed we'll continue to cover you up to the full sum insured until your policy expires.

If you have a mortgage on the insured property and we're aware of it, at our discretion, we may notify the mortgagee in the event of a partial loss claim and follow their instructions for settling the claim in relation to the mortgage.

- **Specified item:** If your claim is for a specified item and we pay the sum insured, then the item will be removed from the policy and the full premium for the item will be charged until your renewal. You will need to add the replacement item to the policy and an additional premium may be charged.

8 Making a complaint.

Delivering on our service promise.

We are committed to providing great service, and our people are dedicated to ensuring we help our customers through life to achieve their financial goals. If we have not lived up to this promise, and you have a concern or complaint about us, we want to make sure you're listened to and that your issue is dealt with in a fair and balanced way.

Our commitment to you.

If you're ever unhappy about something we've done – or perhaps not done – please give us the opportunity to put things right.

Where possible we will resolve your complaint on the spot. If we need some additional time to get back to you, we will let you know. Should we be unable to resolve your concern, we will then refer the complaint to our dedicated Customer Solutions team. Our Internal Dispute Resolution Officers are here to find a solution for you and will ensure that you're regularly updated about the progress we are making to resolve your complaint.

Refer to the back cover of this PDS for our contact details, and for more information about our complaint process refer to our website.

If you are still unhappy.

If you are not satisfied with our response or handling of your complaint, you can contact the Australian Financial Complaints Authority (AFCA).

Australian Financial Complaints Authority.

AFCA is an external dispute resolution scheme. AFCA provides a free and independent service to resolve complaints by consumers and small businesses about financial firms (e.g. banks or insurance providers), where that complaint falls within AFCA's terms of reference.

The contact details for AFCA are set out below.

Online: www.afca.org.au

Email: info@afca.org.au

Phone: 1800 931 678 (free call)

Mail: Australian Financial Complaints Authority
GPO Box 3
Melbourne VIC 3001

9 Glossary of defined terms.

The following terms have special, defined meanings within the context of this PDS and your policy schedule.

accident an event that happens by chance and is not expected in the normal course of events.

accidental loss or damage loss or damage caused by an accident.

actions or movements of the sea or high water include:

- rises in the level of the ocean or sea,
- sea waves,
- high tides or king tides, or
- any other actions or movements of the sea.

building refer to *What's considered a building?* on page 17.

collectible a single item that holds a higher-than-normal value for some reason. For example, one-of-a-kind or irreplaceable items, stamps and medals, special coins, sovereigns and non-negotiable currency.

collection two or more items that form a valuable group and would be less valuable if one was lost or damaged. Accumulated recorded media (CDs, DVDs, etc) is not a collection.

common property any shared area within a strata, group, company or community title plan, such as stairs, driveways or car parks.

contents refer to *What's considered contents?* on page 18.

cover the protection provided by your policy.

electronic audio, visual and computer equipment includes:

- desktop and portable computers, computer game consoles and computer accessories (e.g. printers, scanners and modems),
- video cameras, cameras and photographic equipment,

- portable electronic and communications equipment including mobile phones, tablets, organisers, handheld navigational equipment and MP3/MP4 players, and
- electronic entertainment devices including TVs, DVD/Blu-ray players, video recorders, audio systems and radios.

employee a person:

- employed by you who is defined as or deemed to be a worker or employee, or
- to whom you are liable to pay compensation by any law relating to workers' or employees' compensation.

erosion the gradual deterioration and weathering of earth worn away by action of water, winds or waves.

family is your family members who normally live with you at your home, including your legal or de facto spouse or partner and any member of their family who normally lives with you at your home.

fixtures and fittings household items that are permanently attached, fitted and fixed to the structure of the building. For example, built-in dishwashers, ovens or light fittings.

floating floorboard a floorboard that does not need to be nailed or glued to the subfloor.

flood the covering of normally dry land by water that has escaped or been released from the normal confines of any of the following:

- (a) a lake (whether or not it has been altered or modified)
- (b) a river (whether or not it has been altered or modified)
- (c) a creek (whether or not it has been altered or modified)
- (d) another natural watercourse (whether or not it has been altered or modified)
- (e) a reservoir
- (f) a canal, or
- (g) a dam.

guest or **visitor** person temporarily in the home, whose permanent residence is at a different address.

heave the upwards swelling of soil due to the addition of moisture.

home refer to *What's considered a building?* on page 17.

hydrostatic pressure the pressure exerted by gravity at a given point within a fluid that is at equilibrium, increasing in proportion to depth from a surface. An example of this is causing a pool to move, change shape or lift.

insured event or **event** a happening which may give rise to a claim within the terms and conditions of this policy.

insured site the situation of the residential property stated in the policy schedule where your home is located and the land within the legal boundaries of the property which surrounds the home.

landscaping improvements on the insured site separate to the building, such as permanent garden features like statues and water features; imitation grass; and permanent trees, plants or shrubs.

landslide the movement downslope of a mass of rock, debris, earth, or soil.

malicious acts deliberate acts intended to harm another person's property through an unlawful or wrongful act.

model or **toy aircraft** an unmanned or remotely controlled aircraft (excluding drone) that is used for sport or recreation and is not used for commercial purposes.

mobility scooter a means of transport, usually battery operated, to assist elderly or disabled persons.

negotiable financial documents cash, cheques, money orders etc.

open air an area not lockable and not fully enclosed by walls and a roof.

outdoor decorations such as fixed statues, fixed urns, fixed bird baths and fixed water features and fountains.

PDS this Product Disclosure Statement.

period of insurance the period of insurance stated in your policy schedule.

personal handheld navigational equipment includes a GPS device that can be used on your person or in a motor vehicle.

personal valuables refer to *What are considered Personal Valuables* under your cover on page 44.

policy schedule the most recent document that we issue to you, which details the choices of cover you have made along with the sum(s) insured and excess. It is issued when you first purchase the policy, when you make certain changes to your policy and when we offer to renew your policy.

policyholder any person named as the insured on the policy schedule.

premium the amount you pay us for insurance cover.

recreation activities activities carried out solely for leisure, as opposed to training, club, organised events or professional activities.

retaining wall a wall, which is not part of the residential building, designed to hold back or prevent the movement of earth.

sporting equipment items used for training, recreation activities or participating in a sporting event or game, including bicycles (but not while participating in any organised activity or race).

storm surge an increase in the sea level caused by a cyclone, East Coast Low, or other intense low pressure weather condition.

subsidence the gradual caving in or sinking of land.

sum insured the amount for which each of your building, contents, personal valuables and legal liability are covered, as listed in your current policy schedule.

tools and equipment of trade items or equipment that are used wholly or partly in any business, trade or profession which derive income or where a tax deduction is to be or has been declared.

total loss when the property insured is damaged or destroyed to such an extent it cannot be rebuilt or repaired and/or the total sum insured under the policy has been exhausted.

tsunami an ocean wave caused by undersea earthquake or volcanic eruption.

unliveable when a building is so damaged that normal domestic activities like cooking, sanitation and personal hygiene cannot take place, and local authorities will not provide permission for the home to be inhabited.

unoccupied no person is living and sleeping in the home.

we, our or us means the insurer identified on the inside front cover.

window coverings curtains and blinds (for internal), and awnings and screens (for external).

you, your or insured means:

- any policyholder,
- the policyholder's family who normally resides with you in the home (excluding guests, visitors and boarders),
- in relation to Building cover or Contents cover, any person who has a legal or equitable interest in the property (e.g. a mortgagee), or
- in relation to Contents cover for a strata title property, any person who has a legal or equitable interest in the property (e.g. a mortgagee).

10 Other information.

10.1 The General Insurance Code of Practice.

We have adopted and support the voluntary General Insurance Code of Practice. The code is independently monitored and enforced by the Code Governance Committee. This is a self-regulatory code which sets the standards for the conduct of insurance business in Australia. These standards include appropriate procedures for resolving any dispute that could occur while your policy is current. Should you need further information regarding the Code of Practice, please call us.

10.2 Financial Claims Scheme.

You may be entitled to payment under the Financial Claims Scheme in the event that we become insolvent.

Access to the scheme is subject to eligibility criteria. Information about the scheme can be obtained from fcs.gov.au.

10.3 Protecting your privacy.

At the Allianz Group, we give priority to protecting the privacy of your personal information. We do this by handling personal information in a responsible manner and in accordance with the *Privacy Act 1988* (Cth).

How we collect your personal information.

We usually collect your personal information from you or your agents. We may also collect it from our agents and service providers; other insurers and insurance reference bureaus; people who are involved in a claim or assist us in investigating or processing claims, including third parties claiming under your policy, witnesses and medical practitioners; third parties who may be arranging insurance cover for a group that you are a part of; law enforcement, dispute resolution, statutory and regulatory bodies; marketing lists and industry databases; and publicly available sources.

Why we collect your personal information.

We collect your personal information to enable us to provide our products and services, including to process and settle claims; make offers of products and services provided by us, our related companies, brokers, intermediaries, business partners and others that we have an association with that may interest you; and conduct market or customer research to determine those products or services that may suit you. You can choose not to receive product or service offerings from us (including product or service offerings from us on behalf of our brokers, intermediaries and/or our business partners) or our related companies by calling the Allianz Direct Marketing Privacy Service Line on 1300 360 529, EST 8am to 6pm Monday to Friday, or going to our website's Privacy section at allianz.com.au.

If you do not provide your personal information we require, we may not be able to provide you with our services, including settlement of claims.

Who we disclose your personal information to.

We may disclose your personal information to others with whom we have business arrangements for the purposes listed in the paragraph above or to enable them to offer their products and services to you. These parties may include insurers, intermediaries, reinsurers, insurance reference bureaus, related companies, our advisers, persons involved in claims, external claims data collectors and verifiers, parties that we have an insurance scheme in place with under which you purchased your policy (such as a financier or motor vehicle manufacturer and/or dealer). Disclosure may also be made to government, law enforcement, dispute resolution, statutory or regulatory bodies, or as required by law.

Disclosure overseas.

Your personal information may be disclosed to other companies in the Allianz Group, business partners, reinsurers and service providers that may be located in Australia or overseas. The countries this information may be disclosed to will vary from time to time, but may include India, Canada, Germany, New Zealand, United Kingdom, United States of America and other countries where the Allianz Group has a presence or engages subcontractors. We regularly review the security of our systems used for sending personal information overseas. Any information disclosed may only be used for the purposes of collection detailed above and system administration.

Access to your personal information and complaints.

You may ask for access to the personal information we hold about you and seek correction by calling 1300 360 529 EST 8am to 6pm, Monday to Friday. Our Privacy Policy contains details about how you may make a complaint about a breach of the privacy principles contained in the *Privacy Act 1988* (Cth) and how we deal with complaints. Our Privacy Policy is available at allianz.com.au.

Telephone call recording.

We may record incoming and/or outgoing telephone calls for training or verification purposes. Where we have recorded a telephone call, we can provide you with a copy at your request, where it is reasonable to do so.

Your consent.

By providing us with personal information you, and any other person you provide personal information for, consent to these uses and disclosures until you tell us otherwise. If you wish to withdraw your consent, including for things such as receiving information on products and offers by us or persons we have an association with, please contact us.

This page has been left blank intentionally

This page has been left blank intentionally

This page has been left blank intentionally

We're here if you need us

-  Enquire about your policy on 13 33 30
-  Make a claim on 1300 655 489
-  Visit stgeorge.com.au/homeandcontents
-  Ask at your local branch
-  Mail us at GPO Box 4451, Sydney NSW 2001

If you're experiencing financial difficulties or difficult personal circumstances, find out how we can help.

